

Volume 2

WALL INDEX™

VINYL WALL COVERING

WALL INDEX™
VINYL WALL COVERING

Volume 2

52"-54"
FABRIC BACKED
Designed in USA



WALLCONCEPT

Stocking

52"-54" FABRIC BACKED

Designed in USA



WALLCONCEPT

Stocking



DELVIN



WALL INDEX™
52"/54" VINYL WALLCOVERINGS

DELVIN

WALL INDEX™ VINYL WALL COVERINGS

DELVIN

Product Specifications

Type II, Medium Weight, Class A, Vinyl Coated	
Fabric Backed Wallcovering	
Width	: 52"/54" (132 cm/137cm)
Total Weight	: 15.0.oz./lin.yard - 466 gr/lin-meter
Backing	: Woven Cotton Backing
Fire Rated	: Class - "A" Tested In Accordance ASTM E-84 Tunnel Test
Tensile Breaking Strength	: 80X75 Pounds
Flame Spread	: 20
Smoke Developed	: 25
Pattern Match	: Random Match
Packaging	: 50 Meter Bolts



US Classification : ASTM-E84 Class - A

CHN Classification : GB8624-2012: Class B

EU Classification : EN 15102 : 2007+A1 : 2011



Anti Microbial Features:

Water based environmentally friendly inks, free of Cadmium. Mercury and Ozone depleting chemicals.

Wall Surface Preparations:

The wall surface must be clean, smooth, stable, even and all in one colour before hanging wallpaper. The wall should be dry enough with a maximum of 8% water absorption. If the other side of the wall is in a bathroom, the surface of the wall must be water proof. If the wall is wet of mouldy, the mould needs to be eliminated completely by brushing fungicide on it which will also make it moisture proof.

Adhesive Applying:

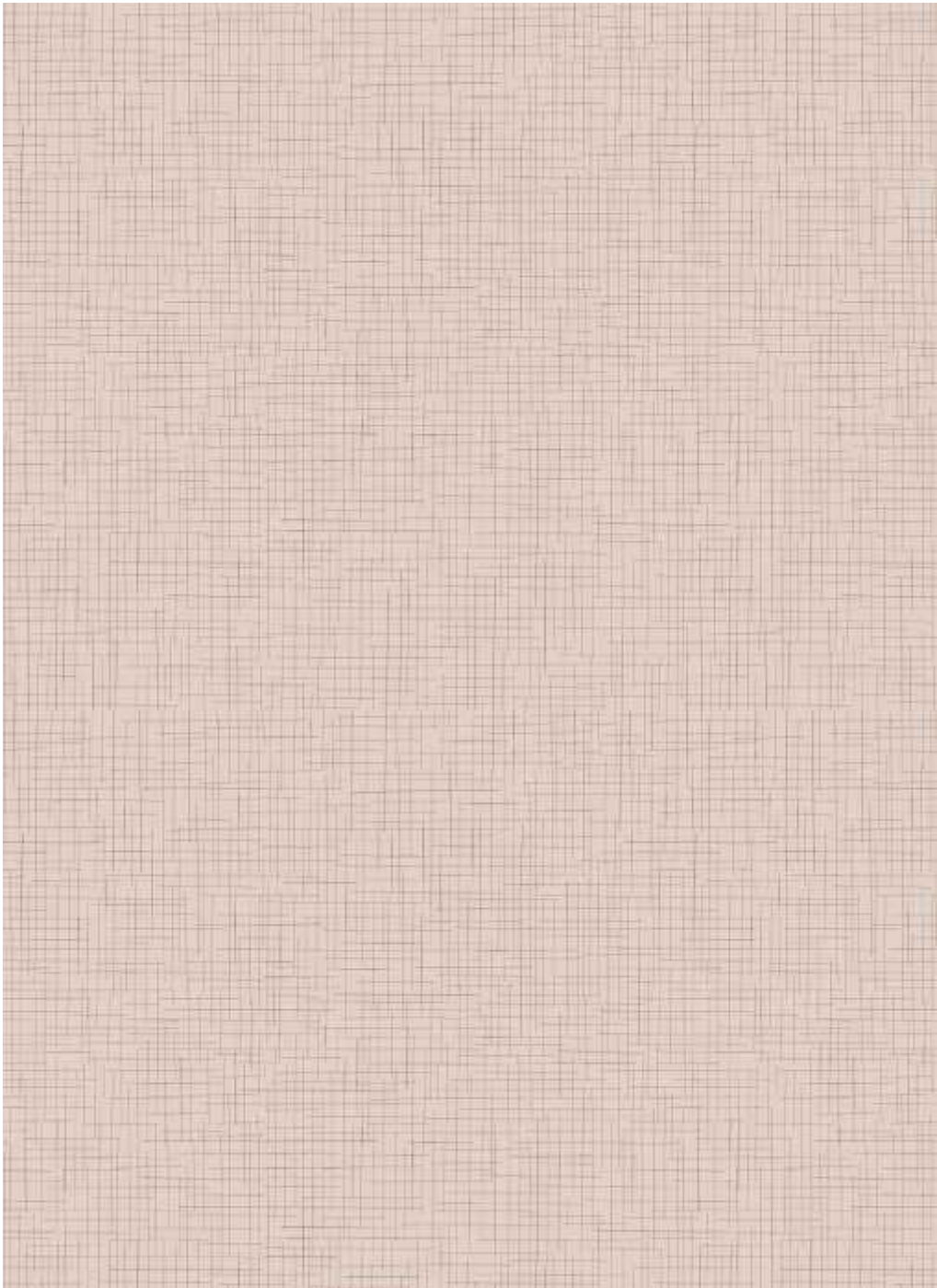
Apply adhesive evenly to the back of the wallpaper, fold and leave it for 5-10 minutes, and let the cloth absorb the adhesive completely. For heavy wallpaper, you can also brush adhesive directly to the wall and wait 5-10 minutes before hanging.

Hanging :

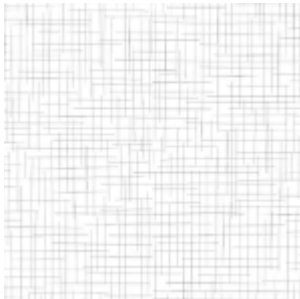
Start to hang from a corner and use a plumb line to ensure the wallpaper is straight and not leaning to one side, if the corner you started from is not straight, use a wiper board to smooth the wallpaper evenly and gently to remove any bubbles. For heavier wallpaper, use a strong glue for the seams. When applying the second strip, it should be applied to edge of the previous one and make sure the design is matched. For plain wallpapers there is no need to match. Overlap the two strips and use a sharp knife to cut in the middle. To make the cutting line straight, use a steel ruler.



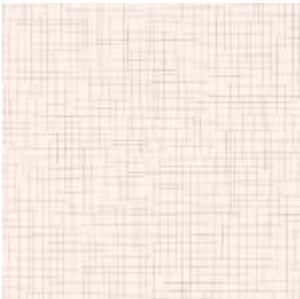
Designed in USA



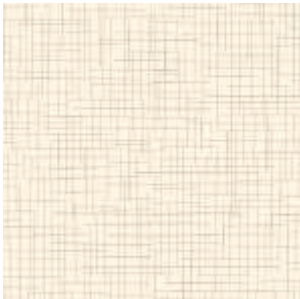
W201-1



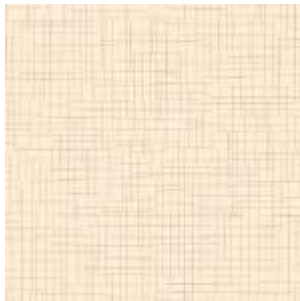
W201-2



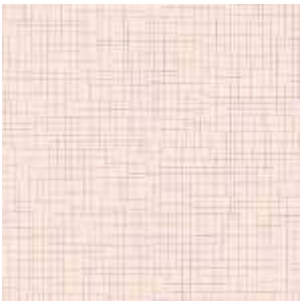
W201-3



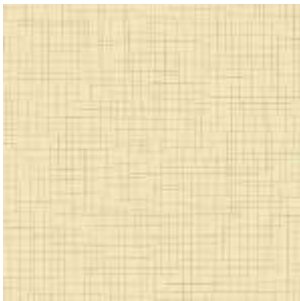
W201-4



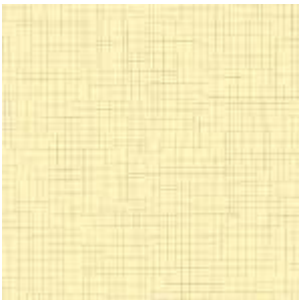
W201-5



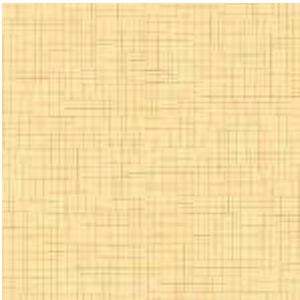
W201-6



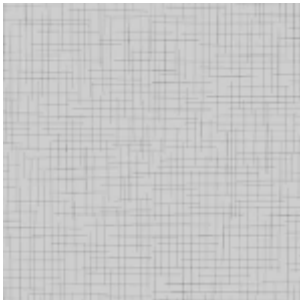
W201-7



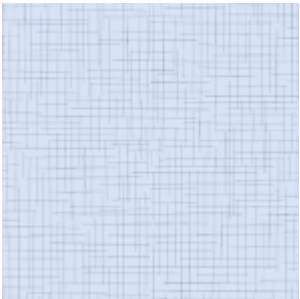
W201-8



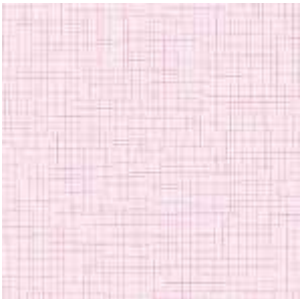
W201-9



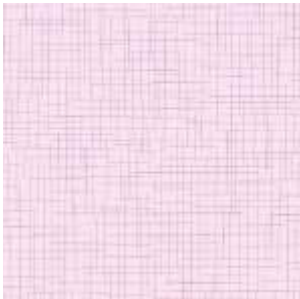
W201-10



W201-11



W201-12



W201-13



WALL INDEX™ VINYL WALL COVERINGS

OKASA

Product Specifications

Type II, Medium Weight, Class A, Vinyl Coated	
Fabric Backed Wallcovering	
Width	: 52"/54" (132 cm/137cm)
Total Weight	: 15.0.oz./lin.yard - 466 gr/lin-meter
Backing	: Woven Cotton Backing
Fire Rated	: Class - "A" Tested In Accordance ASTM E-84 Tunnel Test
Tensile Breaking Strength	: 80X75 Pounds
Flame Spread	: 20
Smoke Developed	: 25
Pattern Match	: Random Match
Packaging	: 50 Meter Bolts



US Classification : ASTM-E84 Class - A

CHN Classification : GB8624-2012: Class B

EU Classification : EN 15102 : 2007+A1 : 2011



Anti Microbial Features:

Water based environmentally friendly inks, free of Cadmium. Mercury and Ozone depleting chemicals.

Wall Surface Preparations:

The wall surface must be clean, smooth, stable, even and all in one colour before hanging wallpaper. The wall should be dry enough with a maximum of 8% water absorption. If the other side of the wall is in a bathroom, the surface of the wall must be water proof. If the wall is wet of mouldy, the mould needs to be eliminated completely by brushing fungicide on it which will also make it moisture proof.

Adhesive Applying:

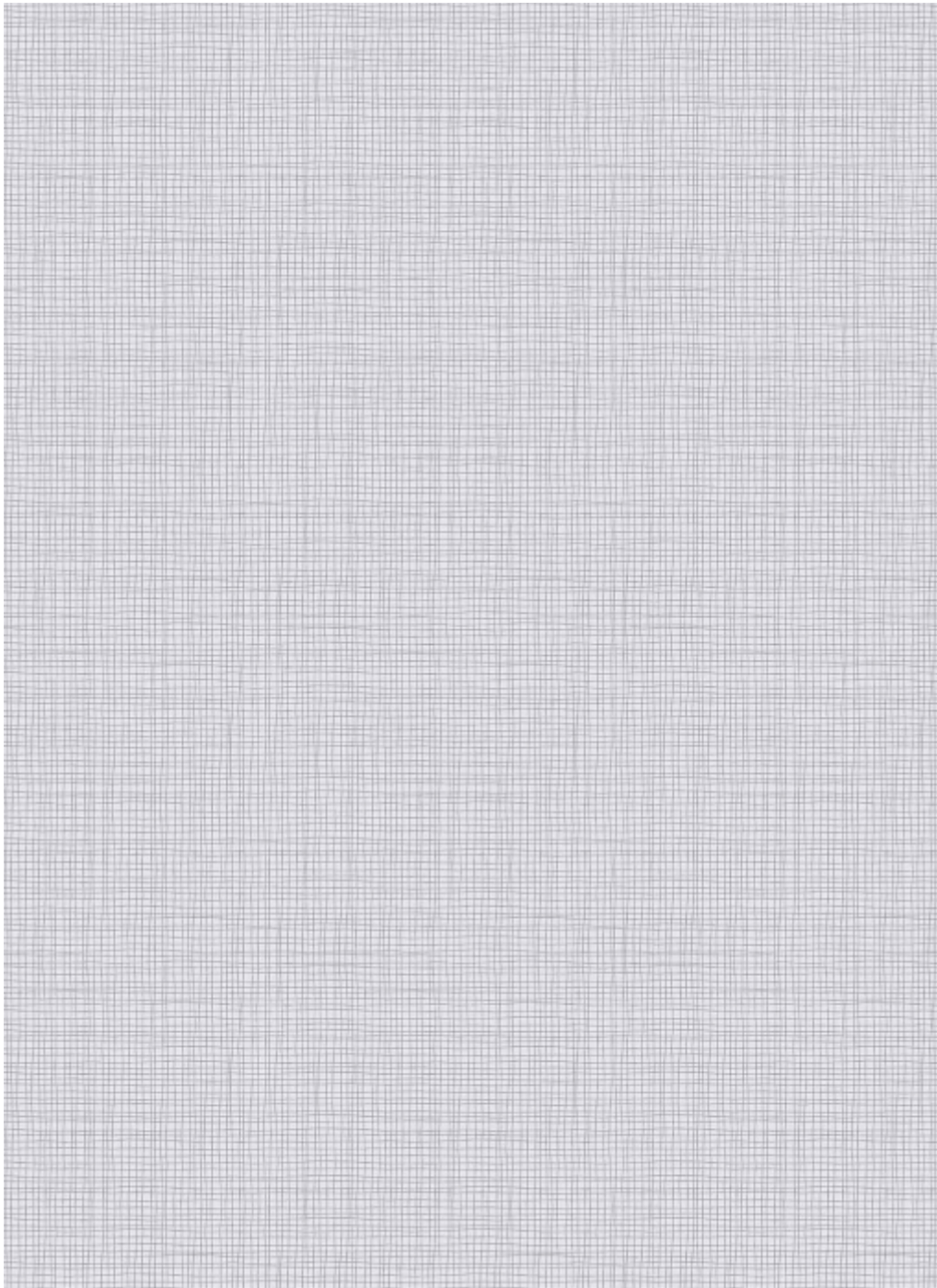
Apply adhesive evenly to the back of the wallpaper, fold and leave it for 5-10 minutes, and let the cloth absorb the adhesive completely. For heavy wallpaper, you can also brush adhesive directly to the wall and wait 5-10 minutes before hanging.

Hanging :

Start to hang from a corner and use a plumb line to ensure the wallpaper is straight and not leaning to one side, if the corner you started from is not straight, use a wiper board to smooth the wallpaper evenly and gently to remove any bubbles. For heavier wallpaper, use a strong glue for the seams. When applying the second strip, it should be applied to edge of the previous one and make sure the design is matched. For plain wallpapers there is no need to match. Overlap the two strips and use a sharp knife to cut in the middle. To make the cutting line straight, use a steel ruler.



Designed in USA



W202-1



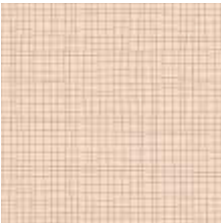
W202-2



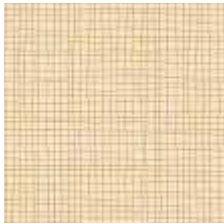
W202-3



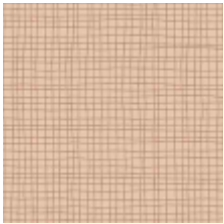
W202-4



W202-5



W202-6



W202-7



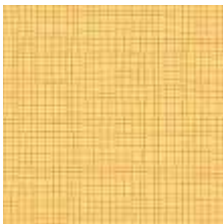
W202-8



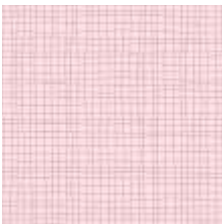
W202-9



W202-10



W202-11



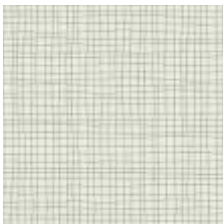
W202-12



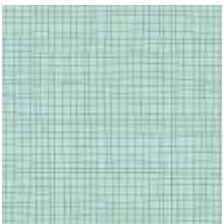
W202-13



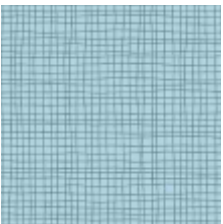
W202-14



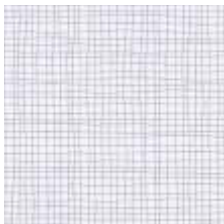
W202-15



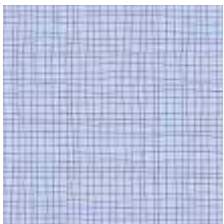
W202-16



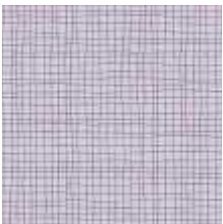
W202-17



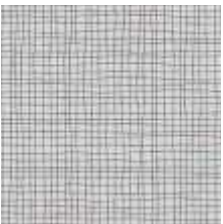
W202-18



W202-19



W202-20



W202-21



KELBER



WALL INDEXTM 52" / 54" VINYL WALLCOVERINGS

KELBER

WALL INDEXTM VINYL WALL COVERINGS

KELBER

Product Specifications

Type II, Medium Weight, Class A, Vinyl Coated	
Fabric Backed Wallcovering	
Width	: 52"/54" (132 cm/137cm)
Total Weight	: 15.0.oz./lin.yard - 466 gr/lin-meter
Backing	: Woven Cotton Backing
Fire Rated	: Class - "A" Tested In Accordance ASTM E-84 Tunnel Test
Tensile Breaking Strength	: 80X75 Pounds
Flame Spread	: 20
Smoke Developed	: 25
Pattern Match	: Random Match
Packaging	: 50 Meter Bolts



US Classification : ASTM-E84 Class - A

CHN Classification : GB8624-2012: Class B

EU Classification : EN 15102 : 2007+A1 : 2011



Anti Microbial Features:

Water based environmentally friendly inks, free of Cadmium. Mercury and Ozone depleting chemicals.

Wall Surface Preparations:

The wall surface must be clean, smooth, stable, even and all in one colour before hanging wallpaper. The wall should be dry enough with a maximum of 8% water absorption. If the other side of the wall is in a bathroom, the surface of the wall must be water proof. If the wall is wet of mouldy, the mould needs to be eliminated completely by brushing fungicide on it which will also make it moisture proof.

Adhesive Applying:

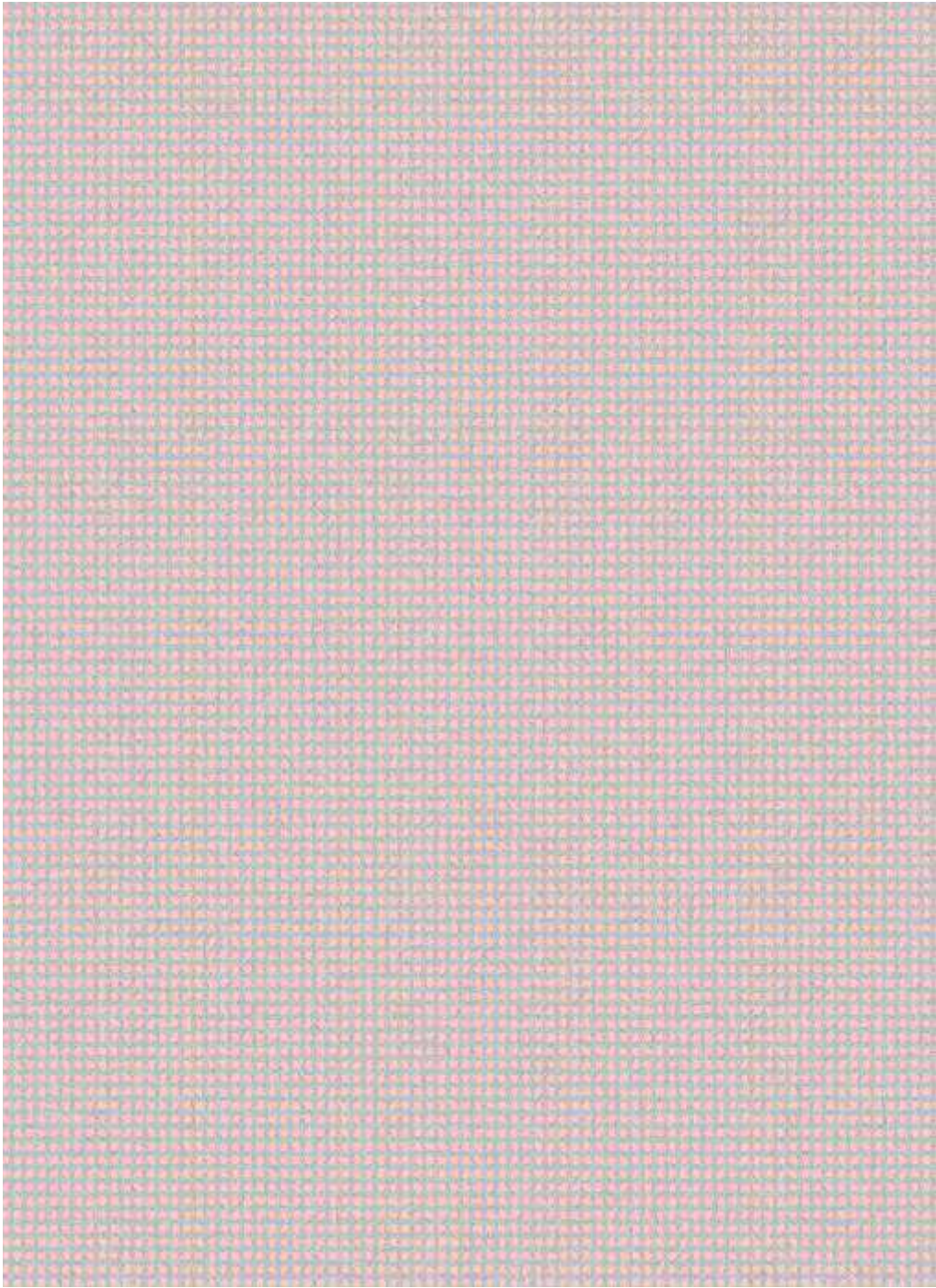
Apply adhesive evenly to the back of the wallpaper, fold and leave it for 5-10 minutes, and let the cloth absorb the adhesive completely. For heavy wallpaper, you can also brush adhesive directly to the wall and wait 5-10 minutes before hanging.

Hanging :

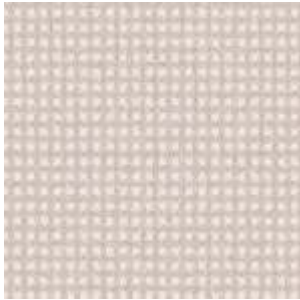
Start to hang from a corner and use a plumb line to ensure the wallpaper is straight and not leaning to one side, if the corner you started from is not straight, use a wiper board to smooth the wallpaper evenly and gently to remove any bubbles. For heavier wallpaper, use a strong glue for the seams. When applying the second strip, it should be applied to edge of the previous one and make sure the design is matched. For plain wallpapers there is no need to match. Overlap the two strips and use a sharp knife to cut in the middle. To make the cutting line straight, use a steel ruler.



Designed in USA



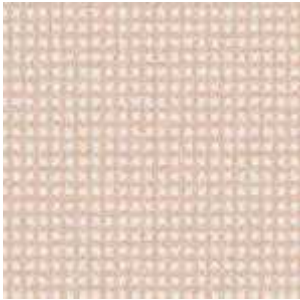
W203-1



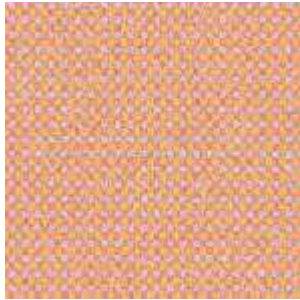
W203-2



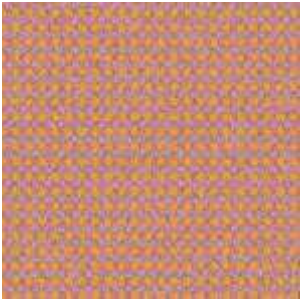
W203-3



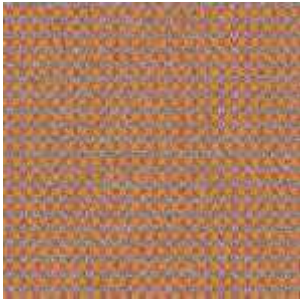
W203-4



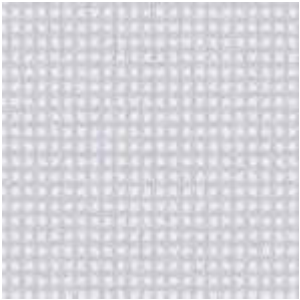
W203-5



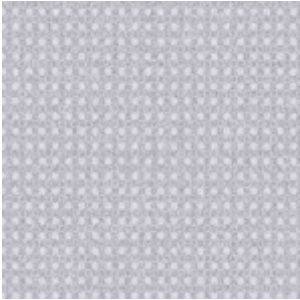
W203-6



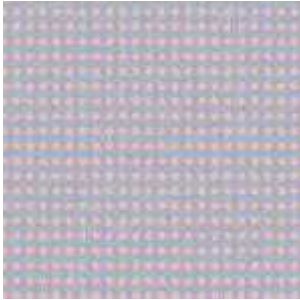
W203-7



W203-8



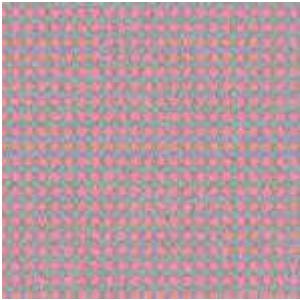
W203-9



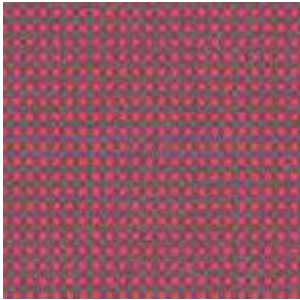
W203-10



W203-11



W203-12



W203-13



COLORCODE



WALL INDEX™
52" / 54" VINYL WALLCOVERINGS

COLORCODE

WALL INDEX™ VINYL WALL COVERINGS

COLORCODE

Product Specifications

Type II, Medium Weight, Class A, Vinyl Coated	
Fabric Backed Wallcovering	
Width	: 52"/54" (132 cm/137cm)
Total Weight	: 15.0.oz./lin.yard - 466 gr/lin-meter
Backing	: Woven Cotton Backing
Fire Rated	: Class - "A" Tested In Accordance ASTM E-84 Tunnel Test
Tensile Breaking Strength	: 80X75 Pounds
Flame Spread	: 20
Smoke Developed	: 25
Pattern Match	: Random Match
Packaging	: 50 Meter Bolts



US Classification : ASTM-E84 Class - A

CHN Classification : GB8624-2012: Class B

EU Classification : EN 15102 : 2007+A1 : 2011



Anti Microbial Features:

Water based environmentally friendly inks, free of Cadmium. Mercury and Ozone depleting chemicals.

Wall Surface Preparations:

The wall surface must be clean, smooth, stable, even and all in one colour before hanging wallpaper. The wall should be dry enough with a maximum of 8% water absorption. If the other side of the wall is in a bathroom, the surface of the wall must be water proof. If the wall is wet of mouldy, the mould needs to be eliminated completely by brushing fungicide on it which will also make it moisture proof.

Adhesive Applying:

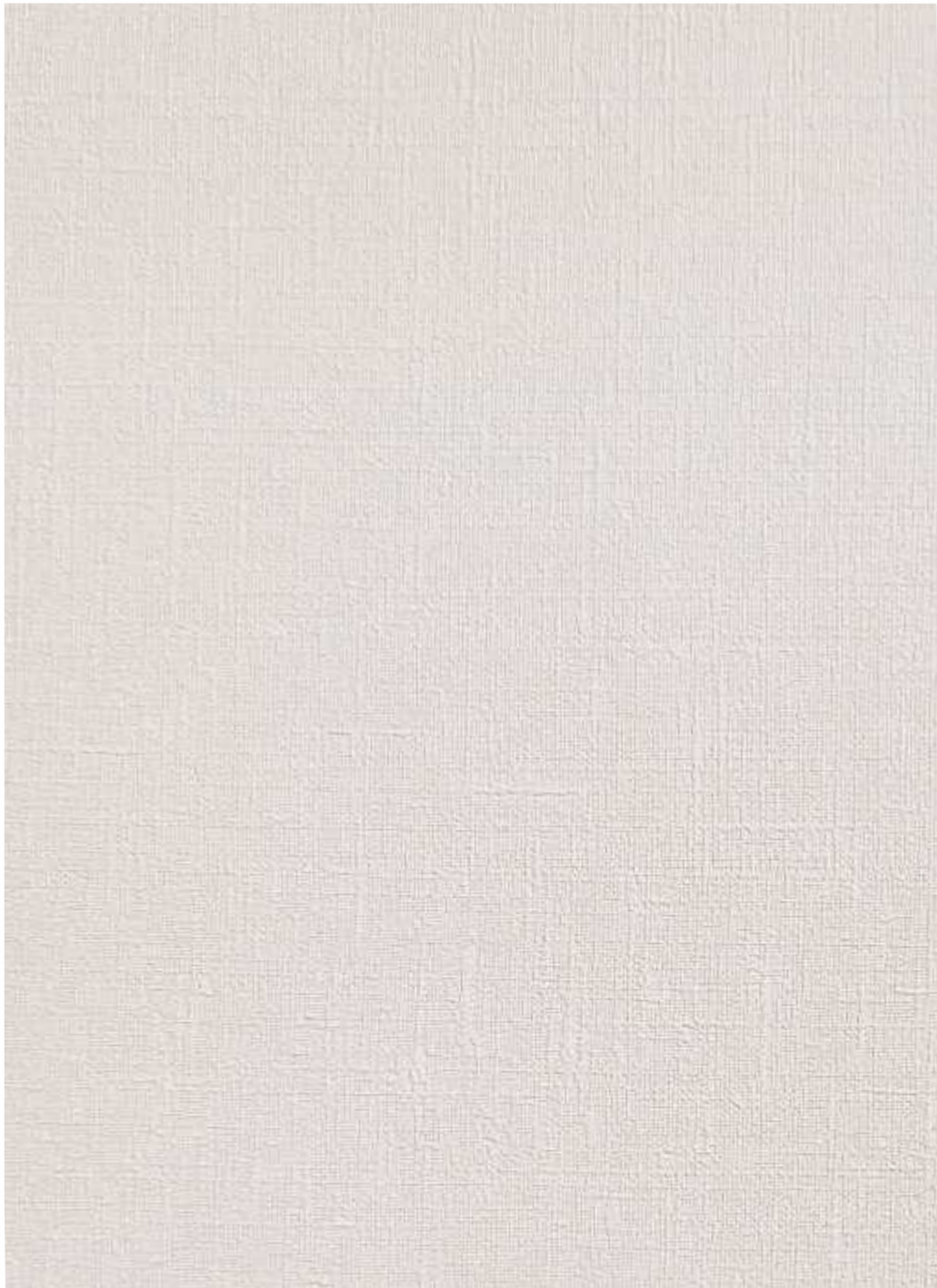
Apply adhesive evenly to the back of the wallpaper, fold and leave it for 5-10 minutes, and let the cloth absorb the adhesive completely. For heavy wallpaper, you can also brush adhesive directly to the wall and wait 5-10 minutes before hanging.

Hanging :

Start to hang from a corner and use a plumb line to ensure the wallpaper is straight and not leaning to one side, if the corner you started from is not straight, use a wiper board to smooth the wallpaper evenly and gently to remove any bubbles. For heavier wallpaper, use a strong glue for the seams. When applying the second strip, it should be applied to edge of the previous one and make sure the design is matched. For plain wallpapers there is no need to match. Overlap the two strips and use a sharp knife to cut in the middle. To make the cutting line straight, use a steel ruler.



Designed in USA



W204-1



W204-2



W204-3



W204-4



W204-5



W204-6



W204-7



W204-8



W204-9



W204-10



W204-11



W204-12



W204-13



W204-14



W204-15



W204-16



W204-17



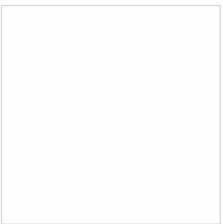
W204-18



W204-19



W204-20



W204-21



MAYSER



WALL INDEXTM 52"/54" VINYL WALLCOVERINGS

MAYSER

WALL INDEXTM VINYL WALL COVERINGS

MAYSER

Product Specifications

Type II, Medium Weight, Class A, Vinyl Coated	
Fabric Backed Wallcovering	
Width	: 52"/54" (132 cm/137cm)
Total Weight	: 15.0.oz./lin.yard - 466 gr/lin-meter
Backing	: Woven Cotton Backing
Fire Rated	: Class - "A" Tested In Accordance ASTM E-84 Tunnel Test
Tensile Breaking Strength	: 80X75 Pounds
Flame Spread	: 20
Smoke Developed	: 25
Pattern Match	: Random Match
Packaging	: 50 Meter Bolts



US Classification : ASTM-E84 Class - A

CHN Classification : GB8624-2012: Class B

EU Classification : EN 15102 : 2007+A1 : 2011



Anti Microbial Features:

Water based environmentally friendly inks, free of Cadmium. Mercury and Ozone depleting chemicals.

Wall Surface Preparations:

The wall surface must be clean, smooth, stable, even and all in one colour before hanging wallpaper. The wall should be dry enough with a maximum of 8% water absorption. If the other side of the wall is in a bathroom, the surface of the wall must be water proof. If the wall is wet of mouldy, the mould needs to be eliminated completely by brushing fungicide on it which will also make it moisture proof.

Adhesive Applying:

Apply adhesive evenly to the back of the wallpaper, fold and leave it for 5-10 minutes, and let the cloth absorb the adhesive completely. For heavy wallpaper, you can also brush adhesive directly to the wall and wait 5-10 minutes before hanging.

Hanging :

Start to hang from a corner and use a plumb line to ensure the wallpaper is straight and not leaning to one side, if the corner you started from is not straight, use a wiper board to smooth the wallpaper evenly and gently to remove any bubbles. For heavier wallpaper, use a strong glue for the seams. When applying the second strip, it should be applied to edge of the previous one and make sure the design is matched. For plain wallpapers there is no need to match. Overlap the two strips and use a sharp knife to cut in the middle. To make the cutting line straight, use a steel ruler.



Designed in USA



W205-1

ENVIRONMENTAL WALL COVERING



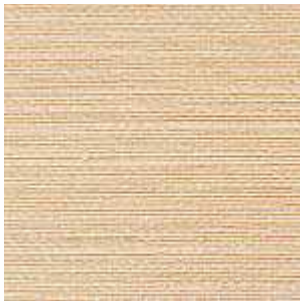
W205-2



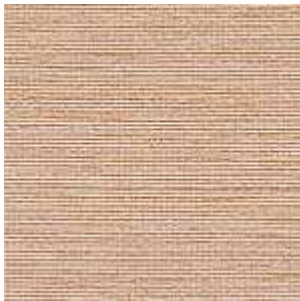
W205-3



W205-4



W205-5



W205-6



W205-7



W205-8



W205-9



W205-10



W205-11



W205-12



W205-13



JEKART



WALL INDEXTM 52" / 54" VINYL WALLCOVERINGS

JEKART

WALL INDEXTM VINYL WALL COVERINGS

JEKART

Product Specifications

Type II, Medium Weight, Class A, Vinyl Coated	
Fabric Backed Wallcovering	
Width	: 52"/54" (132 cm/137cm)
Total Weight	: 15.0.oz./lin.yard - 466 gr/lin-meter
Backing	: Woven Cotton Backing
Fire Rated	: Class - "A" Tested In Accordance ASTM E-84 Tunnel Test
Tensile Breaking Strength	: 80X75 Pounds
Flame Spread	: 20
Smoke Developed	: 25
Pattern Match	: Random Match
Packaging	: 50 Meter Bolts



US Classification : ASTM-E84 Class - A

CHN Classification : GB8624-2012: Class B

EU Classification : EN 15102 : 2007+A1 : 2011



Anti Microbial Features:

Water based environmentally friendly inks, free of Cadmium. Mercury and Ozone depleting chemicals.

Wall Surface Preparations:

The wall surface must be clean, smooth, stable, even and all in one colour before hanging wallpaper. The wall should be dry enough with a maximum of 8% water absorption. If the other side of the wall is in a bathroom, the surface of the wall must be water proof. If the wall is wet of mouldy, the mould needs to be eliminated completely by brushing fungicide on it which will also make it moisture proof.

Adhesive Applying:

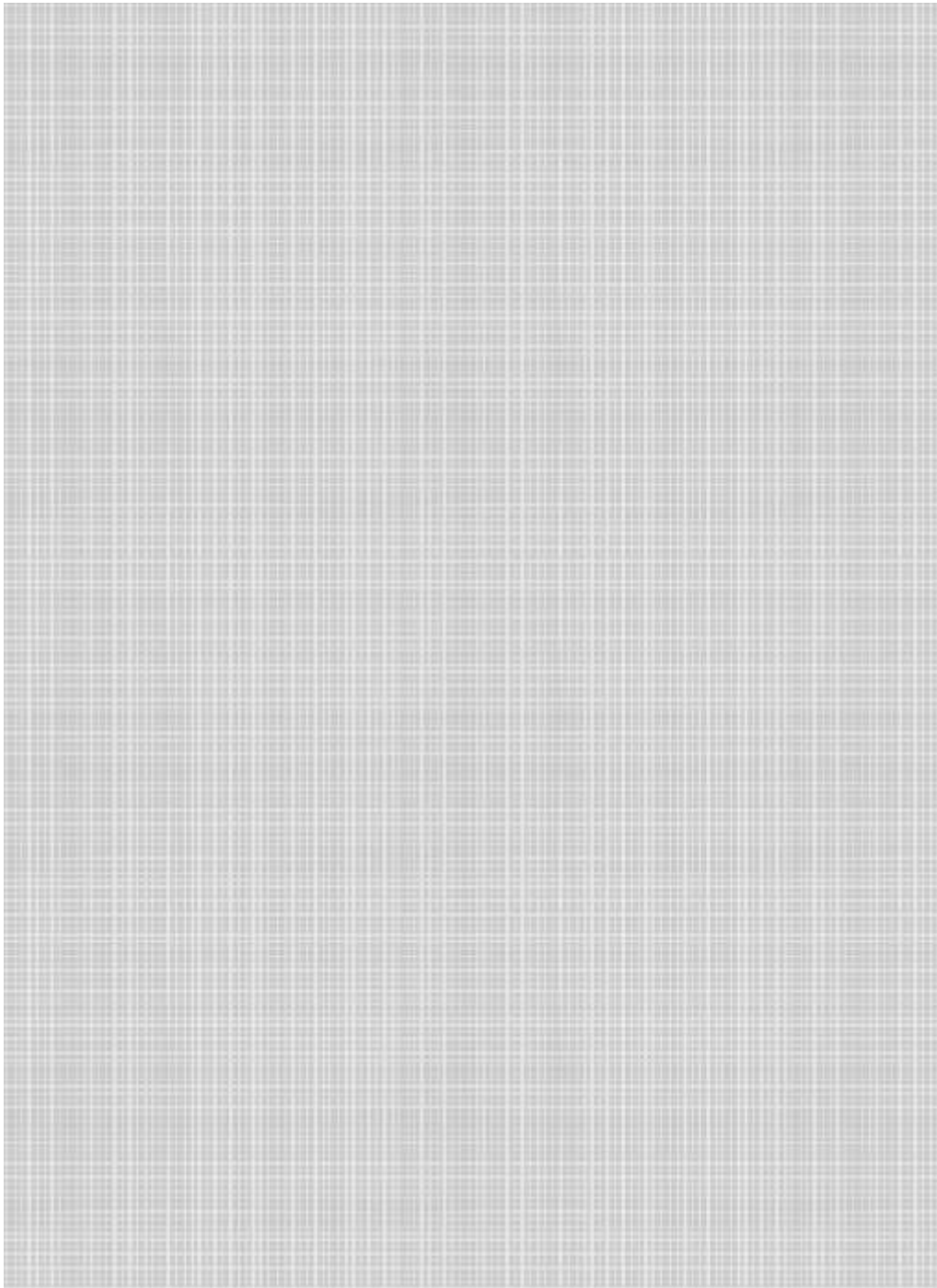
Apply adhesive evenly to the back of the wallpaper, fold and leave it for 5-10 minutes, and let the cloth absorb the adhesive completely. For heavy wallpaper, you can also brush adhesive directly to the wall and wait 5-10 minutes before hanging.

Hanging :

Start to hang from a corner and use a plumb line to ensure the wallpaper is straight and not leaning to one side, if the corner you started from is not straight, use a wiper board to smooth the wallpaper evenly and gently to remove any bubbles. For heavier wallpaper, use a strong glue for the seams. When applying the second strip, it should be applied to edge of the previous one and make sure the design is matched. For plain wallpapers there is no need to match. Overlap the two strips and use a sharp knife to cut in the middle. To make the cutting line straight, use a steel ruler.



Designed in USA



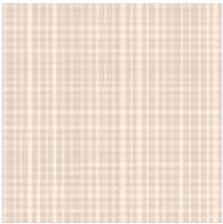
W206-1



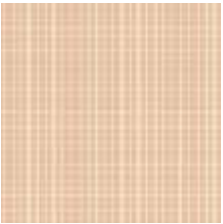
W206-2



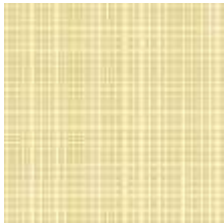
W206-3



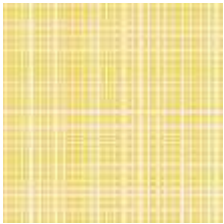
W206-4



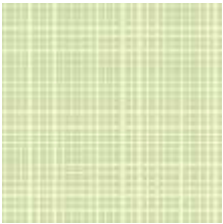
W206-5



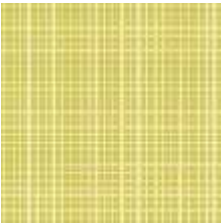
W206-6



W206-7



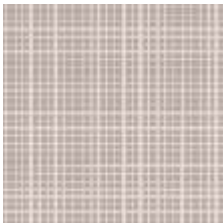
W206-8



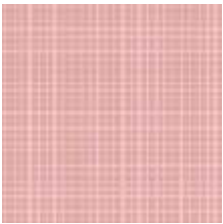
W206-9



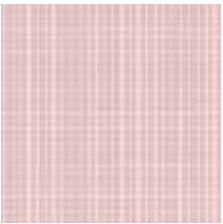
W206-10



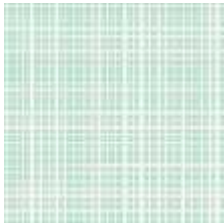
W206-11



W206-12



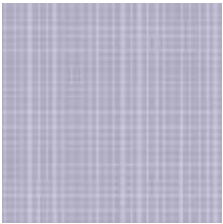
W206-13



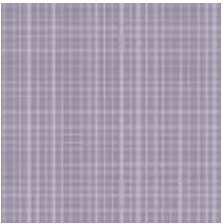
W206-14



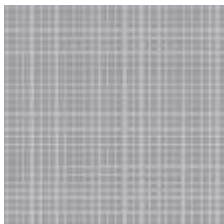
W206-15



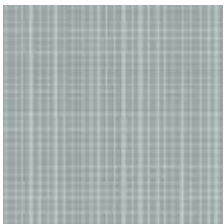
W206-16



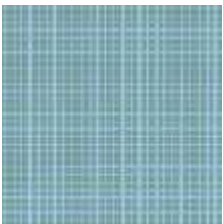
W206-17



W206-18



W206-19



W206-20



W206-21



FABREL



WALL INDEXTM
52" / 54" VINYL WALLCOVERINGS

FABREL

WALL INDEXTM VINYL WALL COVERINGS

FABREL

Product Specifications

Type II, Medium Weight, Class A, Vinyl Coated

Fabric Backed Wallcovering

Width	: 52"/54" (132 cm/137cm)
Total Weight	: 15.0.oz./lin.yard - 466 gr/lin-meter
Backing	: Woven Cotton Backing
Fire Rated	: Class - "A" Tested In Accordance ASTM E-84 Tunnel Test
Tensile Breaking Strength	: 80X75 Pounds
Flame Spread	: 20
Smoke Developed	: 25
Pattern Match	: Random Match
Packaging	: 50 Meter Bolts



US Classification : ASTM-E84 Class - A

CHN Classification : GB8624-2012: Class B

EU Classification : EN 15102 : 2007+A1 : 2011



Anti Microbial Features:

Water based environmentally friendly inks, free of Cadmium. Mercury and Ozone depleting chemicals.

Wall Surface Preparations:

The wall surface must be clean, smooth, stable, even and all in one colour before hanging wallpaper. The wall should be dry enough with a maximum of 8% water absorption. If the other side of the wall is in a bathroom, the surface of the wall must be water proof. If the wall is wet of mouldy, the mould needs to be eliminated completely by brushing fungicide on it which will also make it moisture proof.

Adhesive Applying:

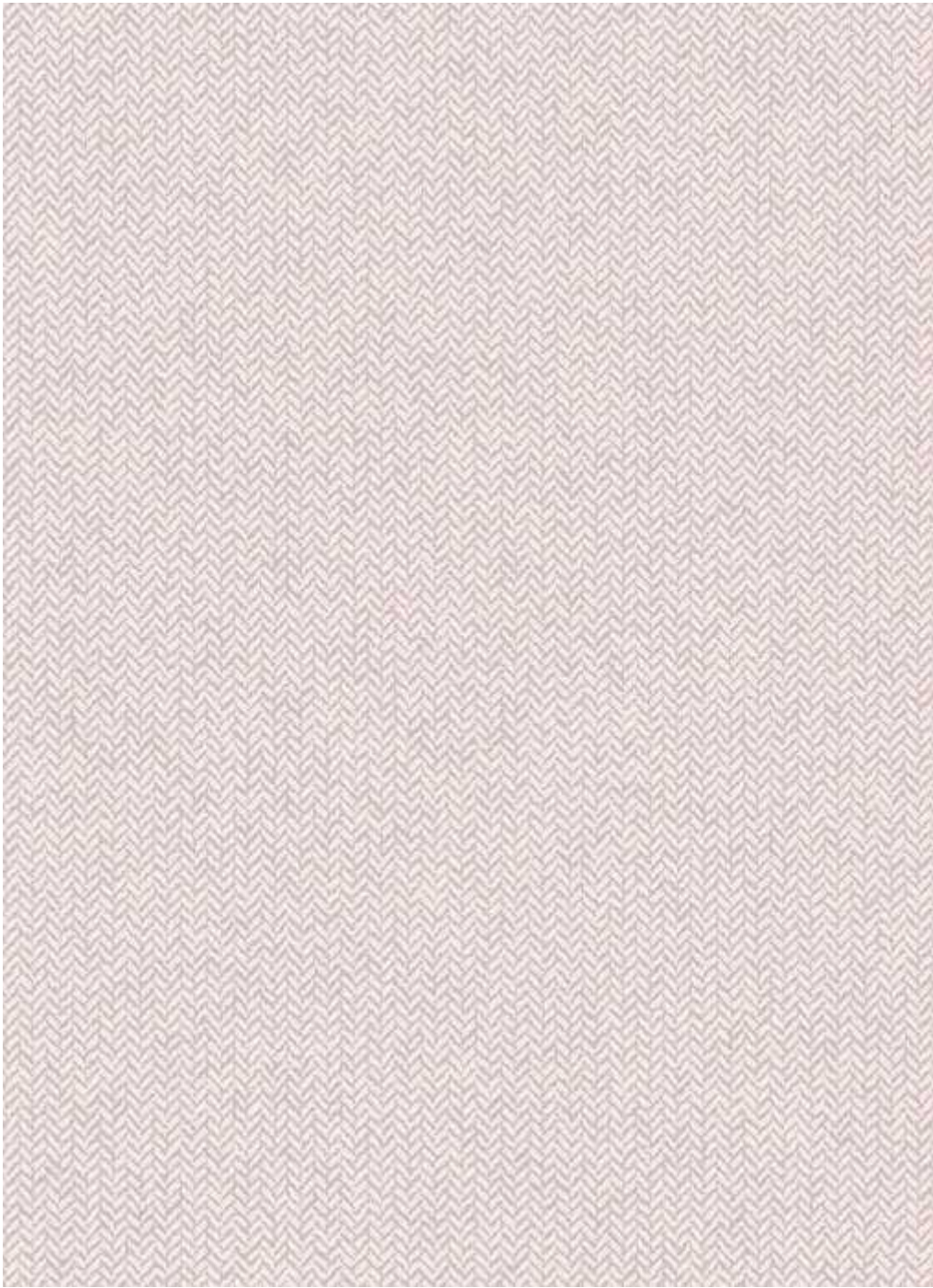
Apply adhesive evenly to the back of the wallpaper, fold and leave it for 5-10 minutes, and let the cloth absorb the adhesive completely. For heavy wallpaper, you can also brush adhesive directly to the wall and wait 5-10 minutes before hanging.

Hanging :

Start to hang from a corner and use a plumb line to ensure the wallpaper is straight and not leaning to one side, if the corner you started from is not straight, use a wiper board to smooth the wallpaper evenly and gently to remove any bubbles. For heavier wallpaper, use a strong glue for the seams. When applying the second strip, it should be applied to edge of the previous one and make sure the design is matched. For plain wallpapers there is no need to match. Overlap the two strips and use a sharp knife to cut in the middle. To make the cutting line straight, use a steel ruler.



Designed in USA



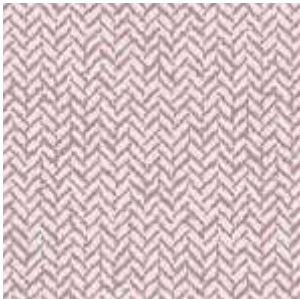
W207-1



W207-2



W207-3



W207-4



W207-5



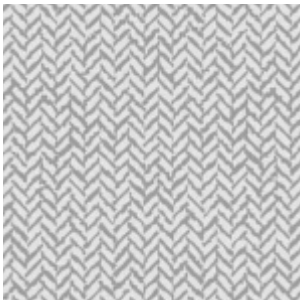
W207-6



W207-7



W207-8



W207-9



W207-10



W207-11



W207-12



W207-13



TEXLIN



WALL INDEX™ 52" / 54" VINYL WALLCOVERINGS

TEXLIN

WALL INDEX™ VINYL WALL COVERINGS

TEXLIN

Product Specifications

Type II, Medium Weight, Class A, Vinyl Coated

Fabric Backed Wallcovering

Width	: 52"/54" (132 cm/137cm)
Total Weight	: 15.0.oz./lin.yard - 466 gr/lin-meter
Backing	: Woven Cotton Backing
Fire Rated	: Class - "A" Tested In Accordance ASTM E-84 Tunnel Test
Tensile Breaking Strength	: 80X75 Pounds
Flame Spread	: 20
Smoke Developed	: 25
Pattern Match	: Random Match
Packaging	: 50 Meter Bolts



US Classification : ASTM-E84 Class - A

CHN Classification : GB8624-2012: Class B

EU Classification : EN 15102 : 2007+A1 : 2011



Anti Microbial Features:

Water based environmentally friendly inks, free of Cadmium. Mercury and Ozone depleting chemicals.

Wall Surface Preparations:

The wall surface must be clean, smooth, stable, even and all in one colour before hanging wallpaper. The wall should be dry enough with a maximum of 8% water absorption. If the other side of the wall is in a bathroom, the surface of the wall must be water proof. If the wall is wet of mouldy, the mould needs to be eliminated completely by brushing fungicide on it which will also make it moisture proof.

Adhesive Applying:

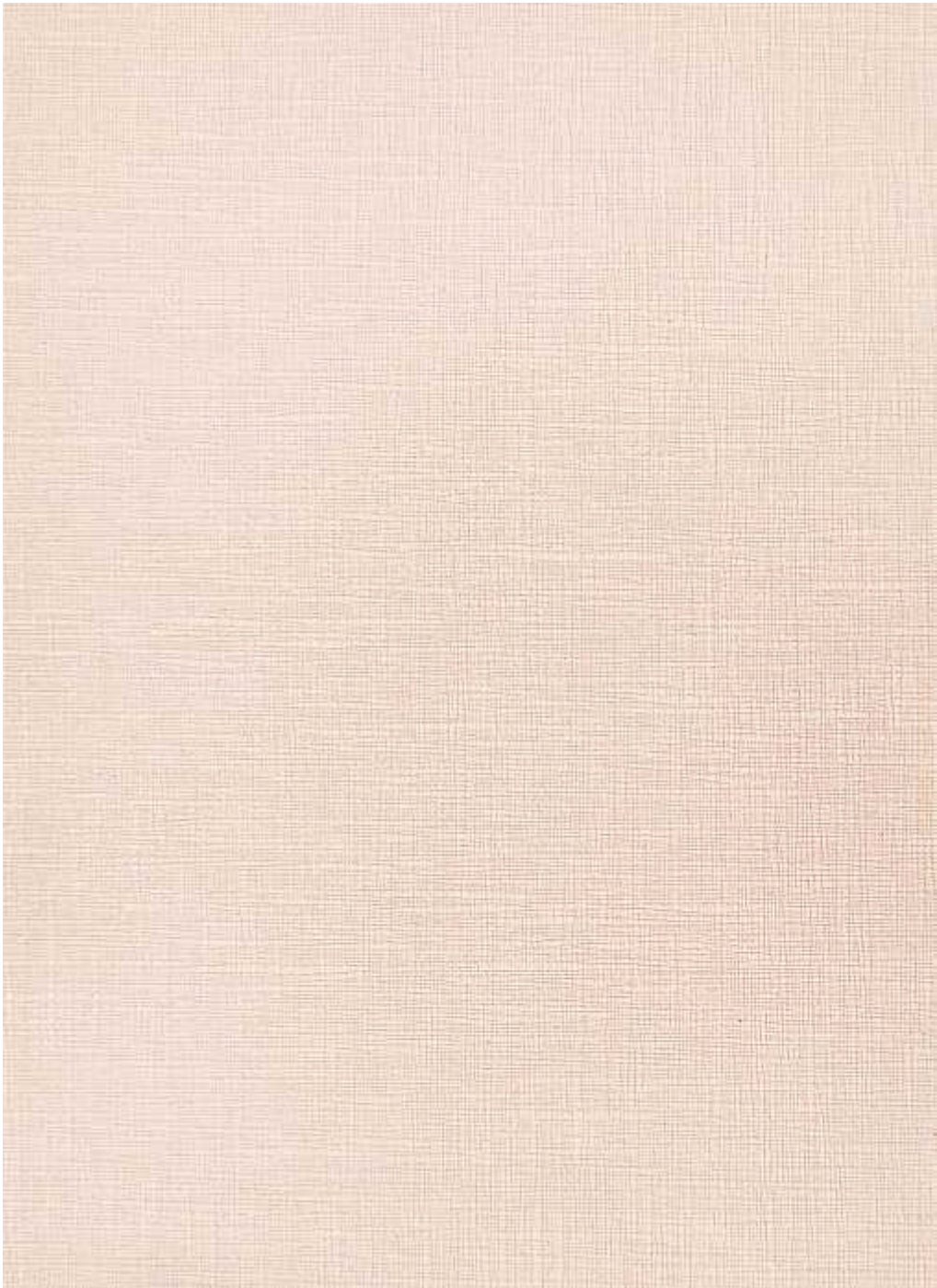
Apply adhesive evenly to the back of the wallpaper, fold and leave it for 5-10 minutes, and let the cloth absorb the adhesive completely. For heavy wallpaper, you can also brush adhesive directly to the wall and wait 5-10 minutes before hanging.

Hanging :

Start to hang from a corner and use a plumb line to ensure the wallpaper is straight and not leaning to one side, if the corner you started from is not straight, use a wiper board to smooth the wallpaper evenly and gently to remove any bubbles. For heavier wallpaper, use a strong glue for the seams. When applying the second strip, it should be applied to edge of the previous one and make sure the design is matched. For plain wallpapers there is no need to match. Overlap the two strips and use a sharp knife to cut in the middle. To make the cutting line straight, use a steel ruler.



Designed in USA



W208-1



W208-2



W208-3



W208-4



W208-5



W208-6



W208-7



W208-8



W208-9



W208-10



W208-11



W208-12



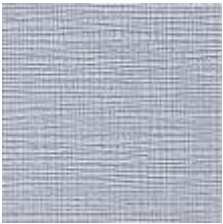
W208-13



W208-14



W208-15



W208-16



W208-17



W208-18



W208-19



W208-20



W208-21



ARTENA



WALL INDEXTM 52" / 54" VINYL WALLCOVERINGS

ARTENA

WALL INDEXTM VINYL WALL COVERINGS

ARTENA

Product Specifications

Type II, Medium Weight, Class A, Vinyl Coated

Fabric Backed Wallcovering

Width	: 52"/54" (132 cm/137cm)
Total Weight	: 15.0.oz./lin.yard - 466 gr/lin-meter
Backing	: Woven Cotton Backing
Fire Rated	: Class - "A" Tested In Accordance ASTM E-84 Tunnel Test
Tensile Breaking Strength	: 80X75 Pounds
Flame Spread	: 20
Smoke Developed	: 25
Pattern Match	: Random Match
Packaging	: 50 Meter Bolts



US Classification : ASTM-E84 Class - A

CHN Classification : GB8624-2012: Class B

EU Classification : EN 15102 : 2007+A1 : 2011



Anti Microbial Features:

Water based environmentally friendly inks, free of Cadmium. Mercury and Ozone depleting chemicals.

Wall Surface Preparations:

The wall surface must be clean, smooth, stable, even and all in one colour before hanging wallpaper. The wall should be dry enough with a maximum of 8% water absorption. If the other side of the wall is in a bathroom, the surface of the wall must be water proof. If the wall is wet of mouldy, the mould needs to be eliminated completely by brushing fungicide on it which will also make it moisture proof.

Adhesive Applying:

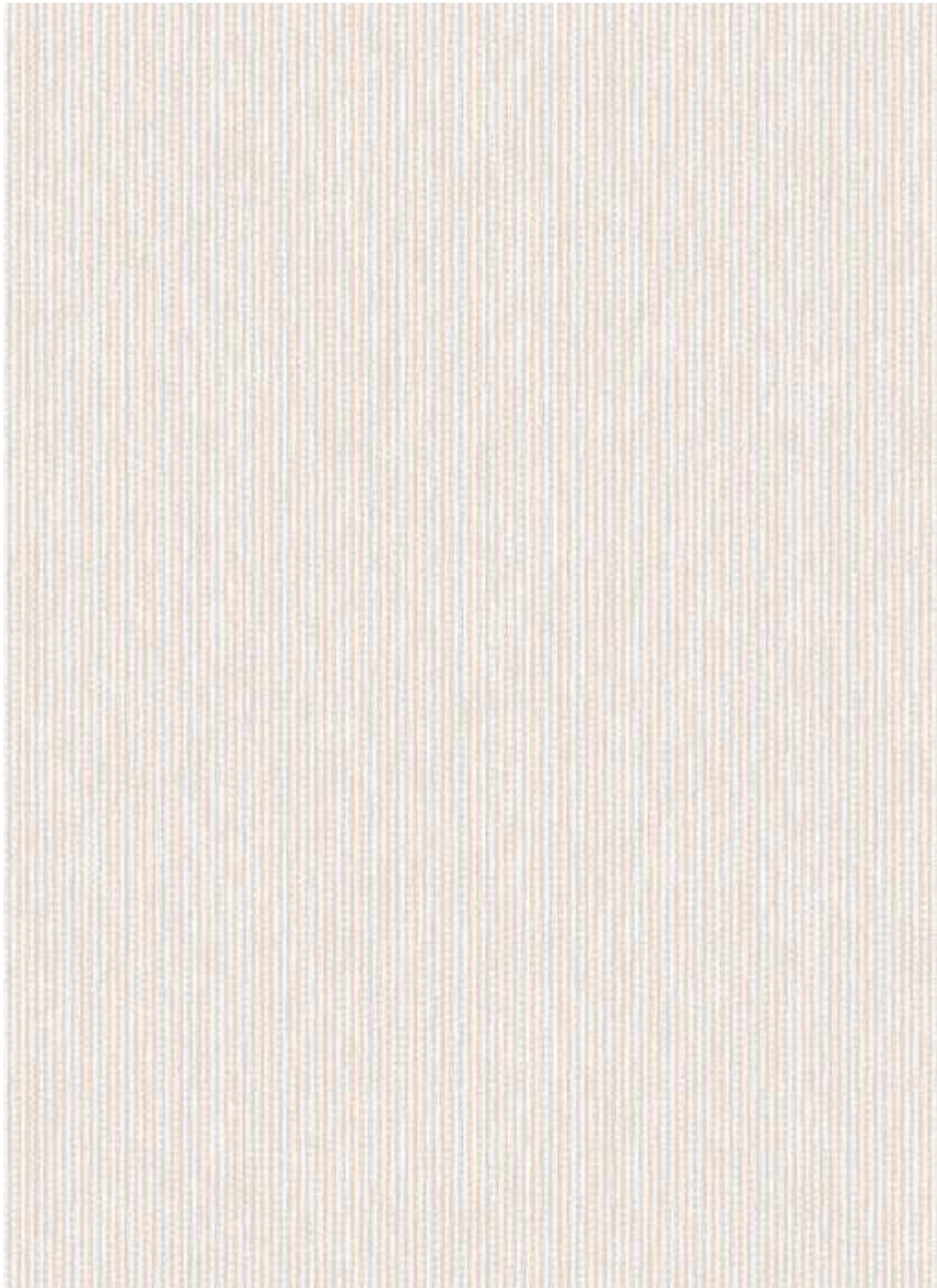
Apply adhesive evenly to the back of the wallpaper, fold and leave it for 5-10 minutes, and let the cloth absorb the adhesive completely. For heavy wallpaper, you can also brush adhesive directly to the wall and wait 5-10 minutes before hanging.

Hanging :

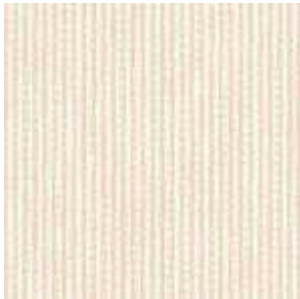
Start to hang from a corner and use a plumb line to ensure the wallpaper is straight and not leaning to one side, if the corner you started from is not straight, use a wiper board to smooth the wallpaper evenly and gently to remove any bubbles. For heavier wallpaper, use a strong glue for the seams. When applying the second strip, it should be applied to edge of the previous one and make sure the design is matched. For plain wallpapers there is no need to match. Overlap the two strips and use a sharp knife to cut in the middle. To make the cutting line straight, use a steel ruler.



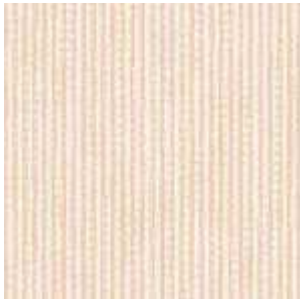
Designed in USA



W209-1



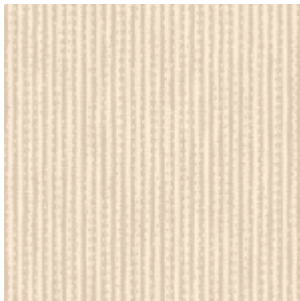
W209-2



W209-3



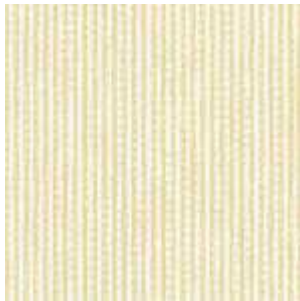
W209-4



W209-5



W209-6



W209-7



W209-8



W209-9



W209-10



W209-11



W209-12



W209-13



WALL INDEX™ 52" / 54" VINYL WALLCOVERINGS

ELEX

WALL INDEX™ VINYL WALL COVERINGS

ELEX

Product Specifications

Type II, Medium Weight, Class A, Vinyl Coated	
Fabric Backed Wallcovering	
Width	: 52"/54" (132 cm/137cm)
Total Weight	: 15.0.oz./lin.yard - 466 gr/lin-meter
Backing	: Woven Cotton Backing
Fire Rated	: Class - "A" Tested In Accordance ASTM E-84 Tunnel Test
Tensile Breaking Strength	: 80X75 Pounds
Flame Spread	: 20
Smoke Developed	: 25
Pattern Match	: Random Match
Packaging	: 50 Meter Bolts



US Classification : ASTM-E84 Class - A

CHN Classification : GB8624-2012: Class B

EU Classification : EN 15102 : 2007+A1 : 2011



Anti Microbial Features:

Water based environmentally friendly inks, free of Cadmium. Mercury and Ozone depleting chemicals.

Wall Surface Preparations:

The wall surface must be clean, smooth, stable, even and all in one colour before hanging wallpaper. The wall should be dry enough with a maximum of 8% water absorption. If the other side of the wall is in a bathroom, the surface of the wall must be water proof. If the wall is wet of mouldy, the mould needs to be eliminated completely by brushing fungicide on it which will also make it moisture proof.

Adhesive Applying:

Apply adhesive evenly to the back of the wallpaper, fold and leave it for 5-10 minutes, and let the cloth absorb the adhesive completely. For heavy wallpaper, you can also brush adhesive directly to the wall and wait 5-10 minutes before hanging.

Hanging :

Start to hang from a corner and use a plumb line to ensure the wallpaper is straight and not leaning to one side, if the corner you started from is not straight, use a wiper board to smooth the wallpaper evenly and gently to remove any bubbles. For heavier wallpaper, use a strong glue for the seams. When applying the second strip, it should be applied to edge of the previous one and make sure the design is matched. For plain wallpapers there is no need to match. Overlap the two strips and use a sharp knife to cut in the middle. To make the cutting line straight, use a steel ruler.



Designed in USA



W210-1



W210-2



W210-3



W210-4



W210-5



W210-6



W210-7



W210-8



W210-9



W210-10



W210-11



W210-12



W210-13



W210-14



W210-15



W210-16



W210-17



W210-18



W210-19



W210-20



W210-21



VENISIA



WALL INDEXTM 52" / 54" VINYL WALLCOVERINGS

VENISIA

WALL INDEXTM VINYL WALL COVERINGS

VENISIA

Product Specifications

Type II, Medium Weight, Class A, Vinyl Coated	
Fabric Backed Wallcovering	
Width	: 52"/54" (132 cm/137cm)
Total Weight	: 15.0.oz./lin.yard - 466 gr/lin-meter
Backing	: Woven Cotton Backing
Fire Rated	: Class - "A" Tested In Accordance ASTM E-84 Tunnel Test
Tensile Breaking Strength	: 80X75 Pounds
Flame Spread	: 20
Smoke Developed	: 25
Pattern Match	: Random Match
Packaging	: 50 Meter Bolts



US Classification : ASTM-E84 Class - A

CHN Classification : GB8624-2012: Class B

EU Classification : EN 15102 : 2007+A1 : 2011



Anti Microbial Features:

Water based environmentally friendly inks, free of Cadmium. Mercury and Ozone depleting chemicals.

Wall Surface Preparations:

The wall surface must be clean, smooth, stable, even and all in one colour before hanging wallpaper. The wall should be dry enough with a maximum of 8% water absorption. If the other side of the wall is in a bathroom, the surface of the wall must be water proof. If the wall is wet of mouldy, the mould needs to be eliminated completely by brushing fungicide on it which will also make it moisture proof.

Adhesive Applying:

Apply adhesive evenly to the back of the wallpaper, fold and leave it for 5-10 minutes, and let the cloth absorb the adhesive completely. For heavy wallpaper, you can also brush adhesive directly to the wall and wait 5-10 minutes before hanging.

Hanging :

Start to hang from a corner and use a plumb line to ensure the wallpaper is straight and not leaning to one side, if the corner you started from is not straight, use a wiper board to smooth the wallpaper evenly and gently to remove any bubbles. For heavier wallpaper, use a strong glue for the seams. When applying the second strip, it should be applied to edge of the previous one and make sure the design is matched. For plain wallpapers there is no need to match. Overlap the two strips and use a sharp knife to cut in the middle. To make the cutting line straight, use a steel ruler.



Designed in USA



W211-1

ENVIRONMENTAL WALL COVERING



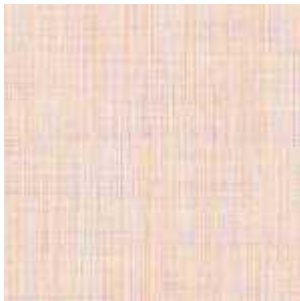
W211-2



W211-3



W211-4



W211-5



W211-6



W211-7



W211-8



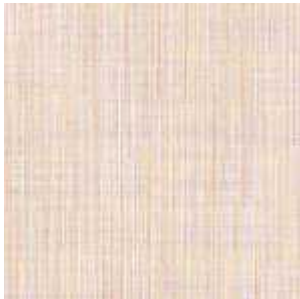
W211-9



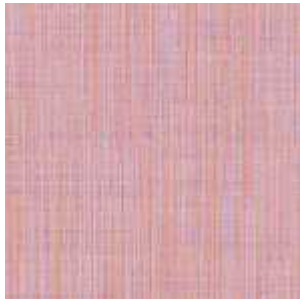
W211-10



W211-11



W211-12



W211-13



WALL INDEX™ 52" / 54" VINYL WALLCOVERINGS

ROXY

WALL INDEX™ VINYL WALL COVERINGS

ROXY

Product Specifications

Type II, Medium Weight, Class A, Vinyl Coated	
Fabric Backed Wallcovering	
Width	: 52"/54" (132 cm/137cm)
Total Weight	: 15.0.oz./lin.yard - 466 gr/lin-meter
Backing	: Woven Cotton Backing
Fire Rated	: Class - "A" Tested In Accordance ASTM E-84 Tunnel Test
Tensile Breaking Strength	: 80X75 Pounds
Flame Spread	: 20
Smoke Developed	: 25
Pattern Match	: Random Match
Packaging	: 50 Meter Bolts



US Classification : ASTM-E84 Class - A

CHN Classification : GB8624-2012: Class B

EU Classification : EN 15102 : 2007+A1 : 2011



Anti Microbial Features:

Water based environmentally friendly inks, free of Cadmium. Mercury and Ozone depleting chemicals.

Wall Surface Preparations:

The wall surface must be clean, smooth, stable, even and all in one colour before hanging wallpaper. The wall should be dry enough with a maximum of 8% water absorption. If the other side of the wall is in a bathroom, the surface of the wall must be water proof. If the wall is wet of mouldy, the mould needs to be eliminated completely by brushing fungicide on it which will also make it moisture proof.

Adhesive Applying:

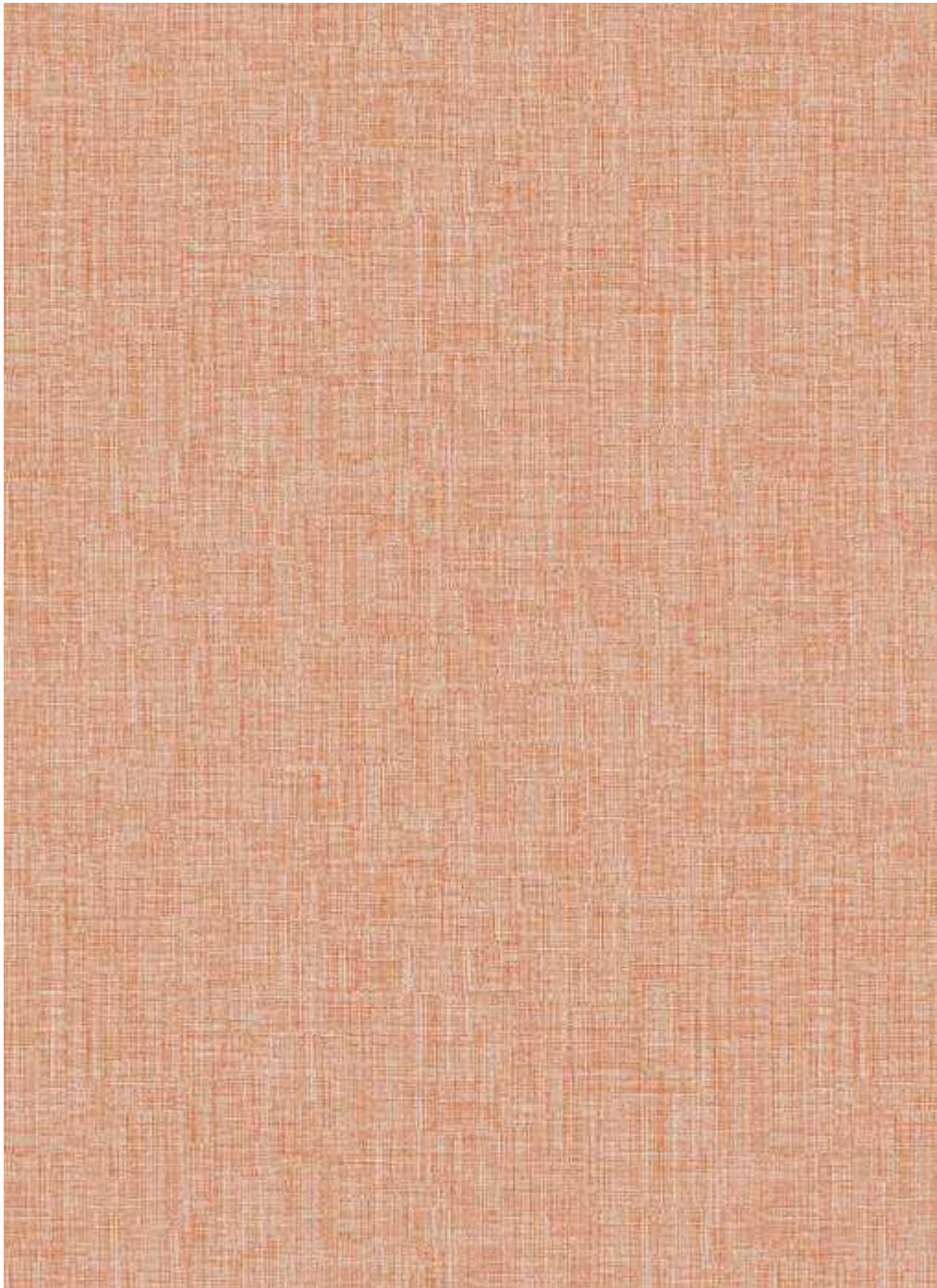
Apply adhesive evenly to the back of the wallpaper, fold and leave it for 5-10 minutes, and let the cloth absorb the adhesive completely. For heavy wallpaper, you can also brush adhesive directly to the wall and wait 5-10 minutes before hanging.

Hanging :

Start to hang from a corner and use a plumb line to ensure the wallpaper is straight and not leaning to one side, if the corner you started from is not straight, use a wiper board to smooth the wallpaper evenly and gently to remove any bubbles. For heavier wallpaper, use a strong glue for the seams. When applying the second strip, it should be applied to edge of the previous one and make sure the design is matched. For plain wallpapers there is no need to match. Overlap the two strips and use a sharp knife to cut in the middle. To make the cutting line straight, use a steel ruler.



Designed in USA



W212-1



W212-2



W212-3



W212-4



W212-5



W212-6



W212-7



W212-8



W212-9



W212-10



W212-11



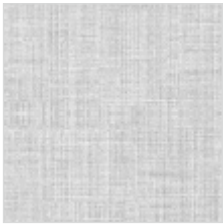
W212-12



W212-13



W212-14



W212-15



W212-16



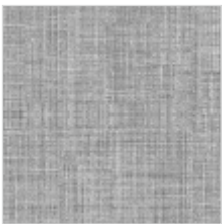
W212-17



W212-18



W212-19



W212-20



W212-21



WALL INDEX™ 52" / 54" VINYL WALLCOVERINGS

ESCOLIN

WALL INDEX™ VINYL WALL COVERINGS

ESCOLIN

Product Specifications

Type II, Medium Weight, Class A, Vinyl Coated

Fabric Backed Wallcovering

Width	: 52"/54" (132 cm/137cm)
Total Weight	: 15.0.oz./lin.yard - 466 gr/lin-meter
Backing	: Woven Cotton Backing
Fire Rated	: Class - "A" Tested In Accordance ASTM E-84 Tunnel Test
Tensile Breaking Strength	: 80X75 Pounds
Flame Spread	: 20
Smoke Developed	: 25
Pattern Match	: Random Match
Packaging	: 50 Meter Bolts



US Classification : ASTM-E84 Class - A

CHN Classification : GB8624-2012: Class B

EU Classification : EN 15102 : 2007+A1 : 2011



Anti Microbial Features:

Water based environmentally friendly inks, free of Cadmium. Mercury and Ozone depleting chemicals.

Wall Surface Preparations:

The wall surface must be clean, smooth, stable, even and all in one colour before hanging wallpaper. The wall should be dry enough with a maximum of 8% water absorption. If the other side of the wall is in a bathroom, the surface of the wall must be water proof. If the wall is wet of mouldy, the mould needs to be eliminated completely by brushing fungicide on it which will also make it moisture proof.

Adhesive Applying:

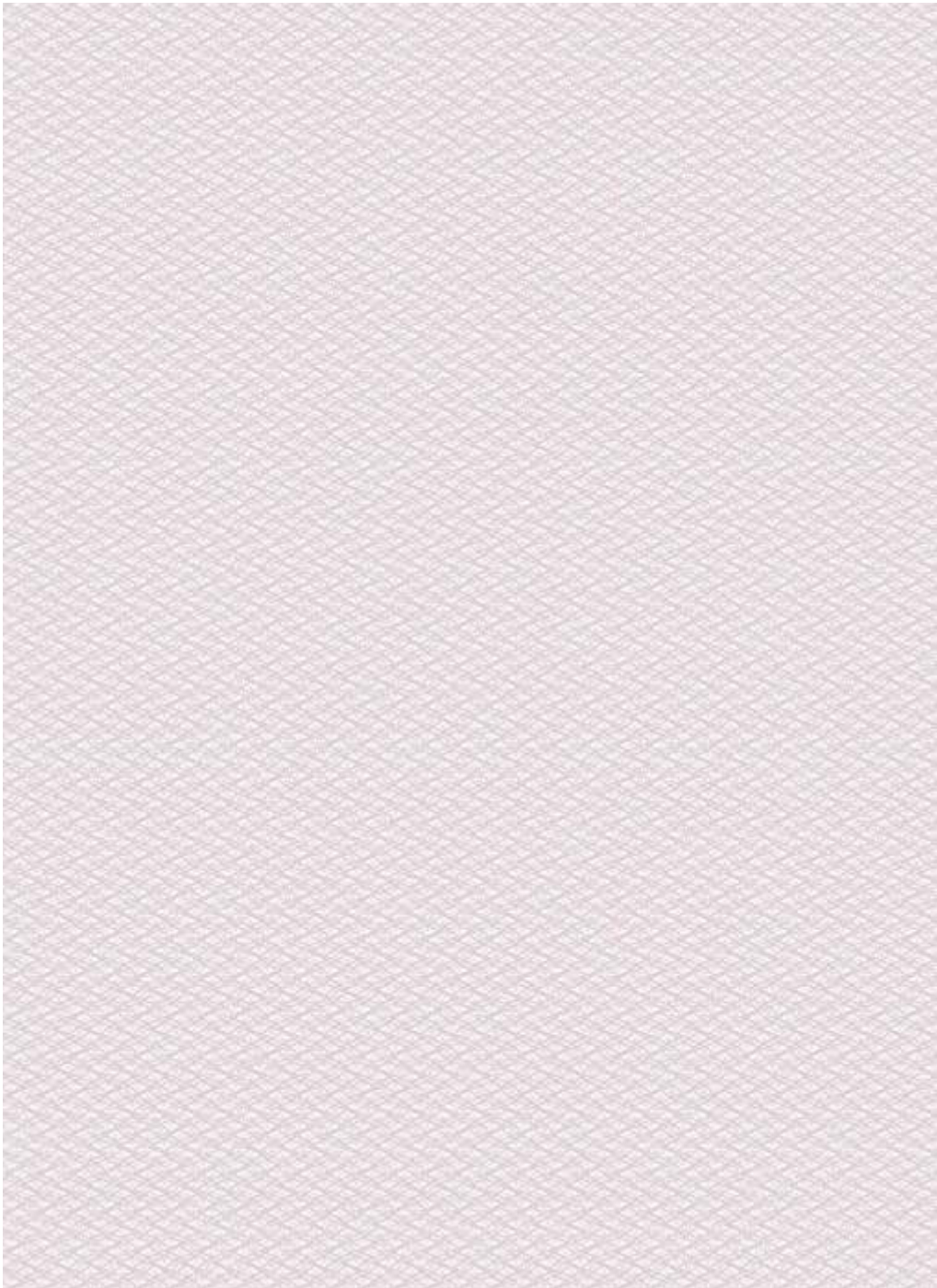
Apply adhesive evenly to the back of the wallpaper, fold and leave it for 5-10 minutes, and let the cloth absorb the adhesive completely. For heavy wallpaper, you can also brush adhesive directly to the wall and wait 5-10 minutes before hanging.

Hanging :

Start to hang from a corner and use a plumb line to ensure the wallpaper is straight and not leaning to one side, if the corner you started from is not straight, use a wiper board to smooth the wallpaper evenly and gently to remove any bubbles. For heavier wallpaper, use a strong glue for the seams. When applying the second strip, it should be applied to edge of the previous one and make sure the design is matched. For plain wallpapers there is no need to match. Overlap the two strips and use a sharp knife to cut in the middle. To make the cutting line straight, use a steel ruler.



Designed in USA



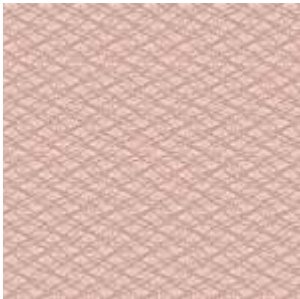
W213-1



W213-2



W213-3



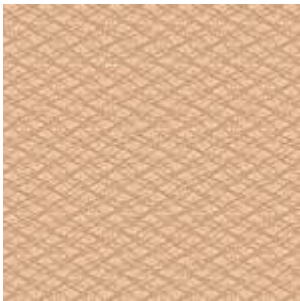
W213-4



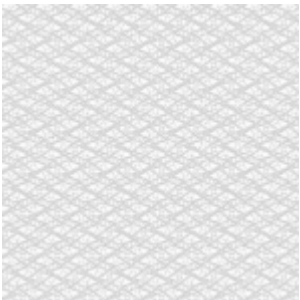
W213-5



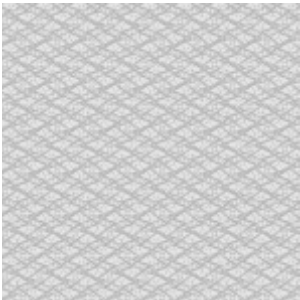
W213-6



W213-7



W213-8



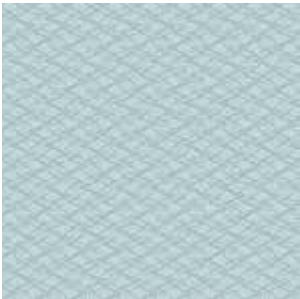
W213-9



W213-10



W213-11



W213-12



W213-13



SYLOVA



WALL INDEXTM 52" / 54" VINYL WALLCOVERINGS

SYLOVA

WALL INDEXTM VINYL WALL COVERINGS

SYLOVA

Product Specifications

Type II, Medium Weight, Class A, Vinyl Coated	
Fabric Backed Wallcovering	
Width	: 52"/54" (132 cm/137cm)
Total Weight	: 15.0.oz./lin.yard - 466 gr/lin-meter
Backing	: Woven Cotton Backing
Fire Rated	: Class - "A" Tested In Accordance ASTM E-84 Tunnel Test
Tensile Breaking Strength	: 80X75 Pounds
Flame Spread	: 20
Smoke Developed	: 25
Pattern Match	: Random Match
Packaging	: 50 Meter Bolts



US Classification : ASTM-E84 Class - A

CHN Classification : GB8624-2012: Class B

EU Classification : EN 15102 : 2007+A1 : 2011



Anti Microbial Features:

Water based environmentally friendly inks, free of Cadmium. Mercury and Ozone depleting chemicals.

Wall Surface Preparations:

The wall surface must be clean, smooth, stable, even and all in one colour before hanging wallpaper. The wall should be dry enough with a maximum of 8% water absorption. If the other side of the wall is in a bathroom, the surface of the wall must be water proof. If the wall is wet of mouldy, the mould needs to be eliminated completely by brushing fungicide on it which will also make it moisture proof.

Adhesive Applying:

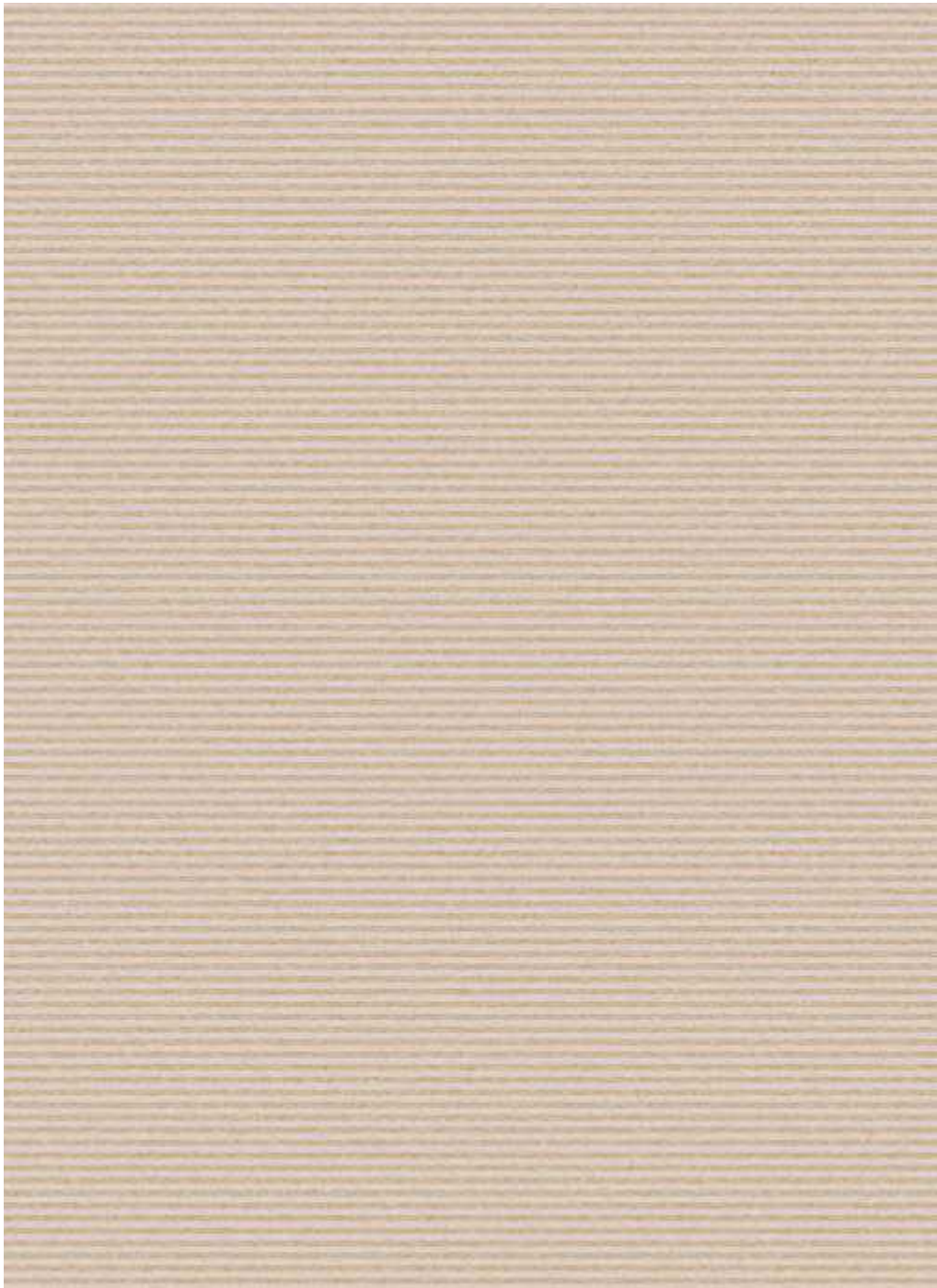
Apply adhesive evenly to the back of the wallpaper, fold and leave it for 5-10 minutes, and let the cloth absorb the adhesive completely. For heavy wallpaper, you can also brush adhesive directly to the wall and wait 5-10 minutes before hanging.

Hanging :

Start to hang from a corner and use a plumb line to ensure the wallpaper is straight and not leaning to one side, if the corner you started from is not straight, use a wiper board to smooth the wallpaper evenly and gently to remove any bubbles. For heavier wallpaper, use a strong glue for the seams. When applying the second strip, it should be applied to edge of the previous one and make sure the design is matched. For plain wallpapers there is no need to match. Overlap the two strips and use a sharp knife to cut in the middle. To make the cutting line straight, use a steel ruler.



Designed in USA



W214-1



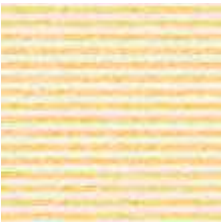
W214-2



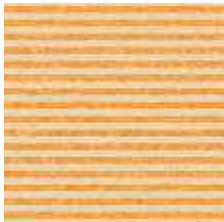
W214-3



W214-4



W214-5



W214-6



W214-7



W214-8



W214-9



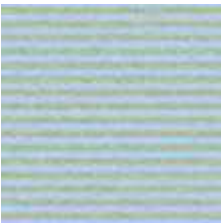
W214-10



W214-11



W214-12



W214-13



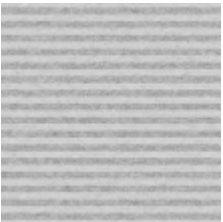
W214-14



W214-15



W214-16



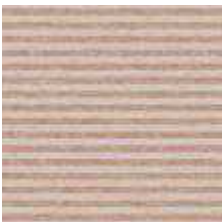
W214-17



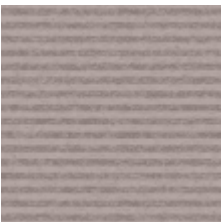
W214-18



W214-19



W214-20



W214-21



FEBKUS



WALL INDEXTM 52" / 54" VINYL WALLCOVERINGS

FEBKUS

WALL INDEXTM VINYL WALL COVERINGS

FEBKUS

Product Specifications

Type II, Medium Weight, Class A, Vinyl Coated	
Fabric Backed Wallcovering	
Width	: 52"/54" (132 cm/137cm)
Total Weight	: 15.0.oz./lin.yard - 466 gr/lin-meter
Backing	: Woven Cotton Backing
Fire Rated	: Class - "A" Tested In Accordance ASTM E-84 Tunnel Test
Tensile Breaking Strength	: 80X75 Pounds
Flame Spread	: 20
Smoke Developed	: 25
Pattern Match	: Repeat 4.72 inches
Packaging	: 50 Meter Bolts



US Classification : ASTM-E84 Class - A

CHN Classification : GB8624-2012: Class B

EU Classification : EN 15102 : 2007+A1 : 2011



Anti Microbial Features:

Water based environmentally friendly inks, free of Cadmium. Mercury and Ozone depleting chemicals.

Wall Surface Preparations:

The wall surface must be clean, smooth, stable, even and all in one colour before hanging wallpaper. The wall should be dry enough with a maximum of 8% water absorption. If the other side of the wall is in a bathroom, the surface of the wall must be water proof. If the wall is wet of mouldy, the mould needs to be eliminated completely by brushing fungicide on it which will also make it moisture proof.

Adhesive Applying:

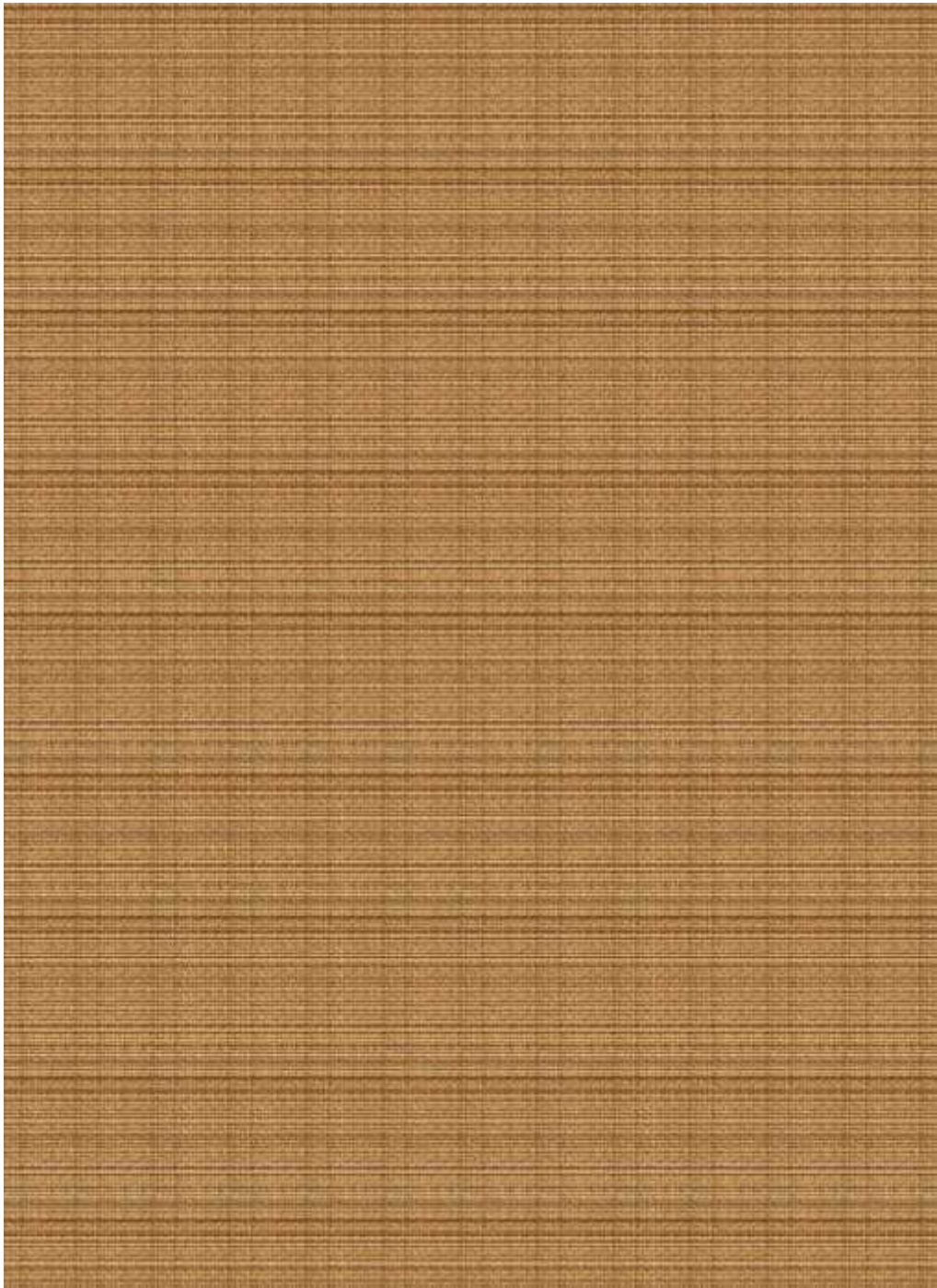
Apply adhesive evenly to the back of the wallpaper, fold and leave it for 5-10 minutes, and let the cloth absorb the adhesive completely. For heavy wallpaper, you can also brush adhesive directly to the wall and wait 5-10 minutes before hanging.

Hanging :

Start to hang from a corner and use a plumb line to ensure the wallpaper is straight and not leaning to one side, if the corner you started from is not straight, use a wiper board to smooth the wallpaper evenly and gently to remove any bubbles. For heavier wallpaper, use a strong glue for the seams. When applying the second strip, it should be applied to edge of the previous one and make sure the design is matched. For plain wallpapers there is no need to match. Overlap the two strips and use a sharp knife to cut in the middle. To make the cutting line straight, use a steel ruler.



Designed in USA



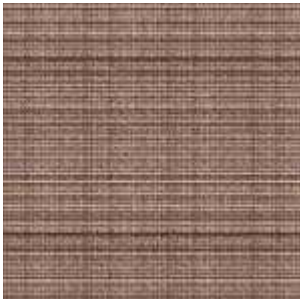
W215-1



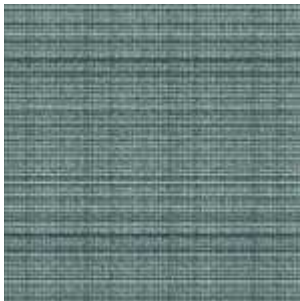
W215-2



W215-3



W215-4



W215-5



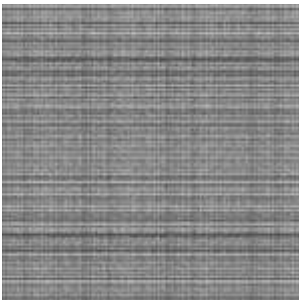
W215-6



W215-7



W215-8



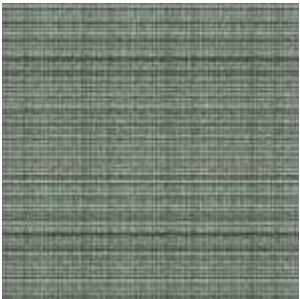
W215-9



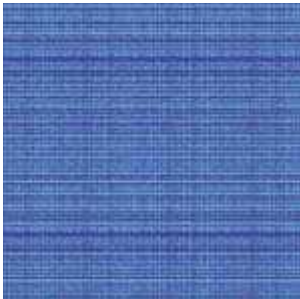
W215-10



W215-11



W215-12



W215-13



WALL INDEX™ 52"/54" VINYL WALLCOVERINGS

SPIKAR

WALL INDEX™ VINYL WALL COVERINGS

SPIKAR

Product Specifications

Type II, Medium Weight, Class A, Vinyl Coated	
Fabric Backed Wallcovering	
Width	: 52"/54" (132 cm/137cm)
Total Weight	: 15.0.oz./lin.yard - 466 gr/lin-meter
Backing	: Woven Cotton Backing
Fire Rated	: Class - "A" Tested In Accordance ASTM E-84 Tunnel Test
Tensile Breaking Strength	: 80X75 Pounds
Flame Spread	: 20
Smoke Developed	: 25
Pattern Match	: Random Match
Packaging	: 50 Meter Bolts



US Classification : ASTM-E84 Class - A

CHN Classification : GB8624-2012: Class B

EU Classification : EN 15102 : 2007+A1 : 2011



Anti Microbial Features:

Water based environmentally friendly inks, free of Cadmium. Mercury and Ozone depleting chemicals.

Wall Surface Preparations:

The wall surface must be clean, smooth, stable, even and all in one colour before hanging wallpaper. The wall should be dry enough with a maximum of 8% water absorption. If the other side of the wall is in a bathroom, the surface of the wall must be water proof. If the wall is wet of mouldy, the mould needs to be eliminated completely by brushing fungicide on it which will also make it moisture proof.

Adhesive Applying:

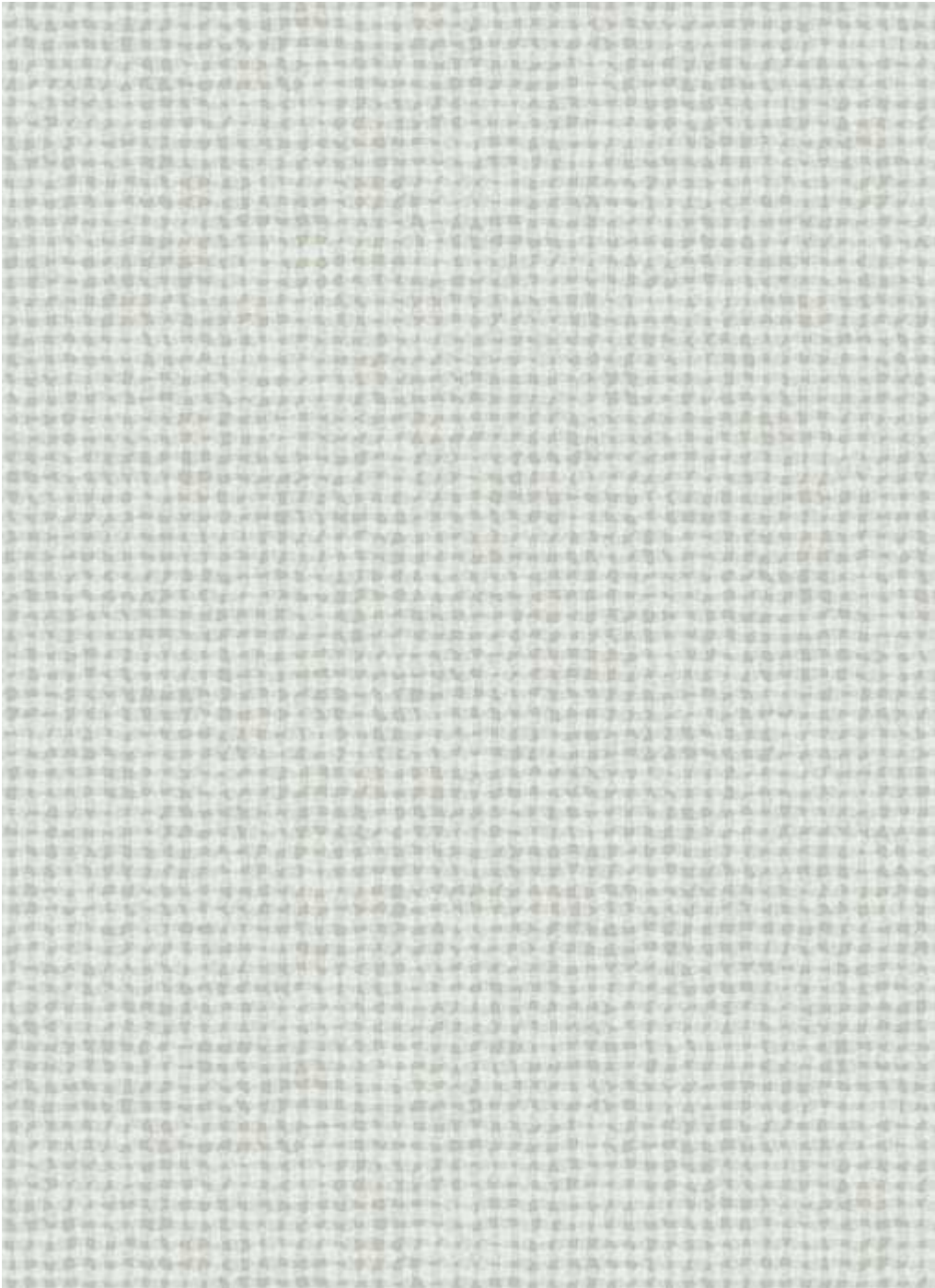
Apply adhesive evenly to the back of the wallpaper, fold and leave it for 5-10 minutes, and let the cloth absorb the adhesive completely. For heavy wallpaper, you can also brush adhesive directly to the wall and wait 5-10 minutes before hanging.

Hanging :

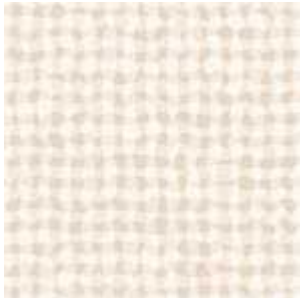
Start to hang from a corner and use a plumb line to ensure the wallpaper is straight and not leaning to one side, if the corner you started from is not straight, use a wiper board to smooth the wallpaper evenly and gently to remove any bubbles. For heavier wallpaper, use a strong glue for the seams. When applying the second strip, it should be applied to edge of the previous one and make sure the design is matched. For plain wallpapers there is no need to match. Overlap the two strips and use a sharp knife to cut in the middle. To make the cutting line straight, use a steel ruler.



Designed in USA



W216-1



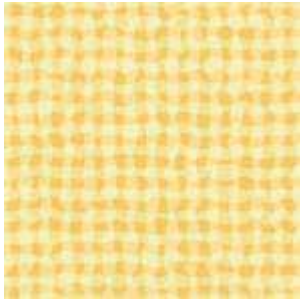
W216-2



W216-3



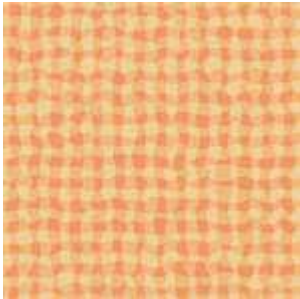
W216-4



W216-5



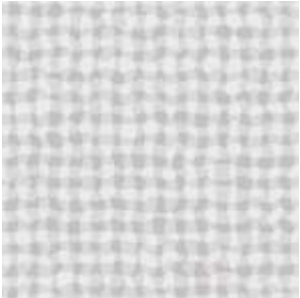
W216-6



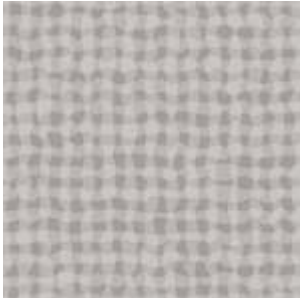
W216-7



W216-8



W216-9



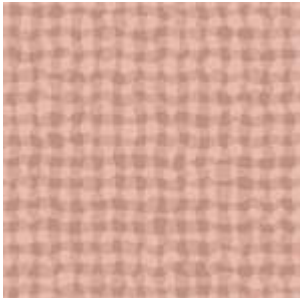
W216-10



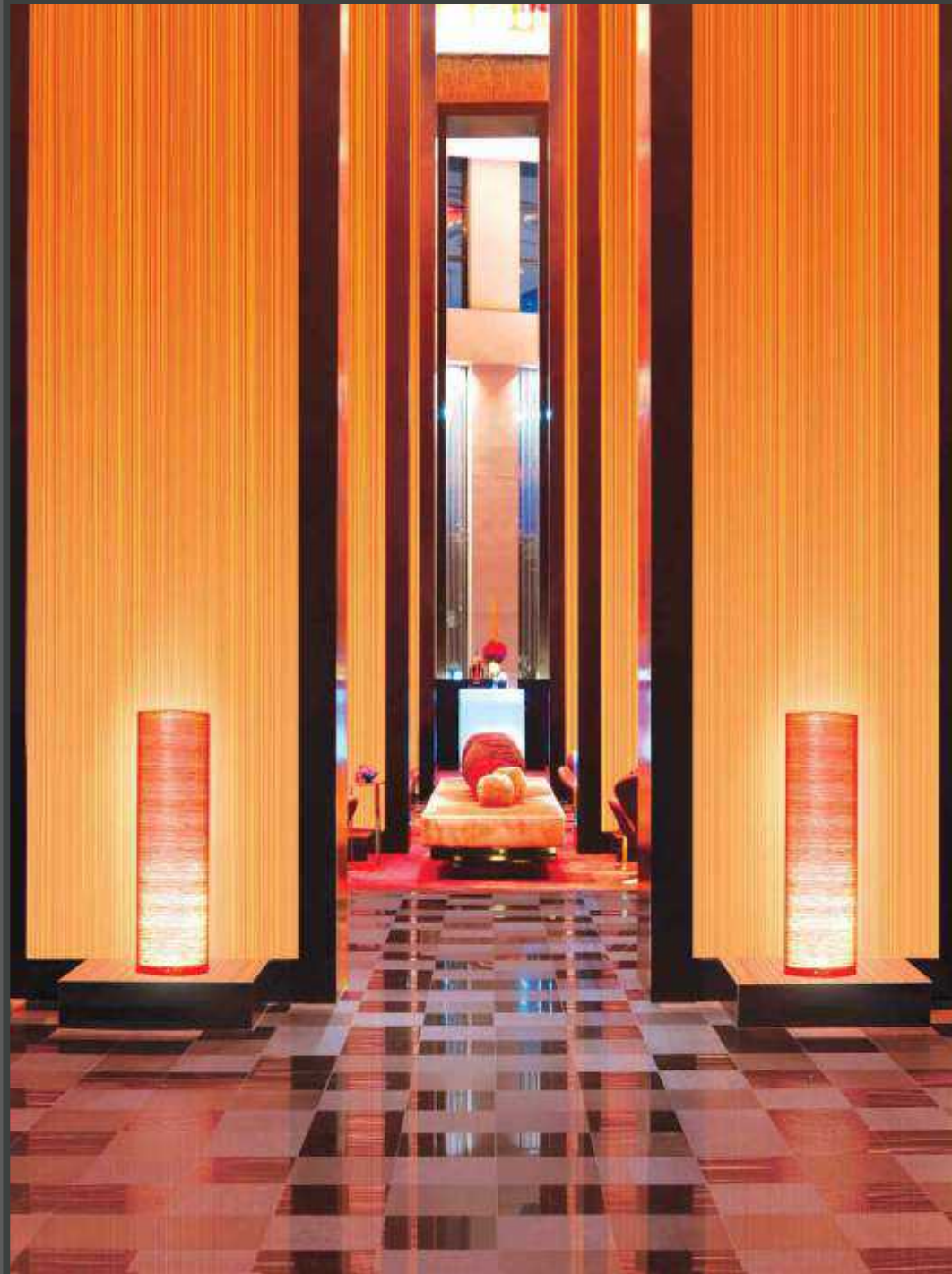
W216-11



W216-12



W216-13



WALL INDEXTM 52" / 54" VINYL WALLCOVERINGS

LINESU

WALL INDEXTM VINYL WALL COVERINGS

LINESU

Product Specifications

Type II, Medium Weight, Class A, Vinyl Coated	
Fabric Backed Wallcovering	
Width	: 52"/54" (132 cm/137cm)
Total Weight	: 15.0.oz./lin.yard - 466 gr/lin-meter
Backing	: Woven Cotton Backing
Fire Rated	: Class - "A" Tested In Accordance ASTM E-84 Tunnel Test
Tensile Breaking Strength	: 80X75 Pounds
Flame Spread	: 20
Smoke Developed	: 25
Pattern Match	: Random Match
Packaging	: 50 Meter Bolts



US Classification : ASTM-E84 Class - A

CHN Classification : GB8624-2012: Class B

EU Classification : EN 15102 : 2007+A1 : 2011



Anti Microbial Features:

Water based environmentally friendly inks, free of Cadmium. Mercury and Ozone depleting chemicals.

Wall Surface Preparations:

The wall surface must be clean, smooth, stable, even and all in one colour before hanging wallpaper. The wall should be dry enough with a maximum of 8% water absorption. If the other side of the wall is in a bathroom, the surface of the wall must be water proof. If the wall is wet of mouldy, the mould needs to be eliminated completely by brushing fungicide on it which will also make it moisture proof.

Adhesive Applying:

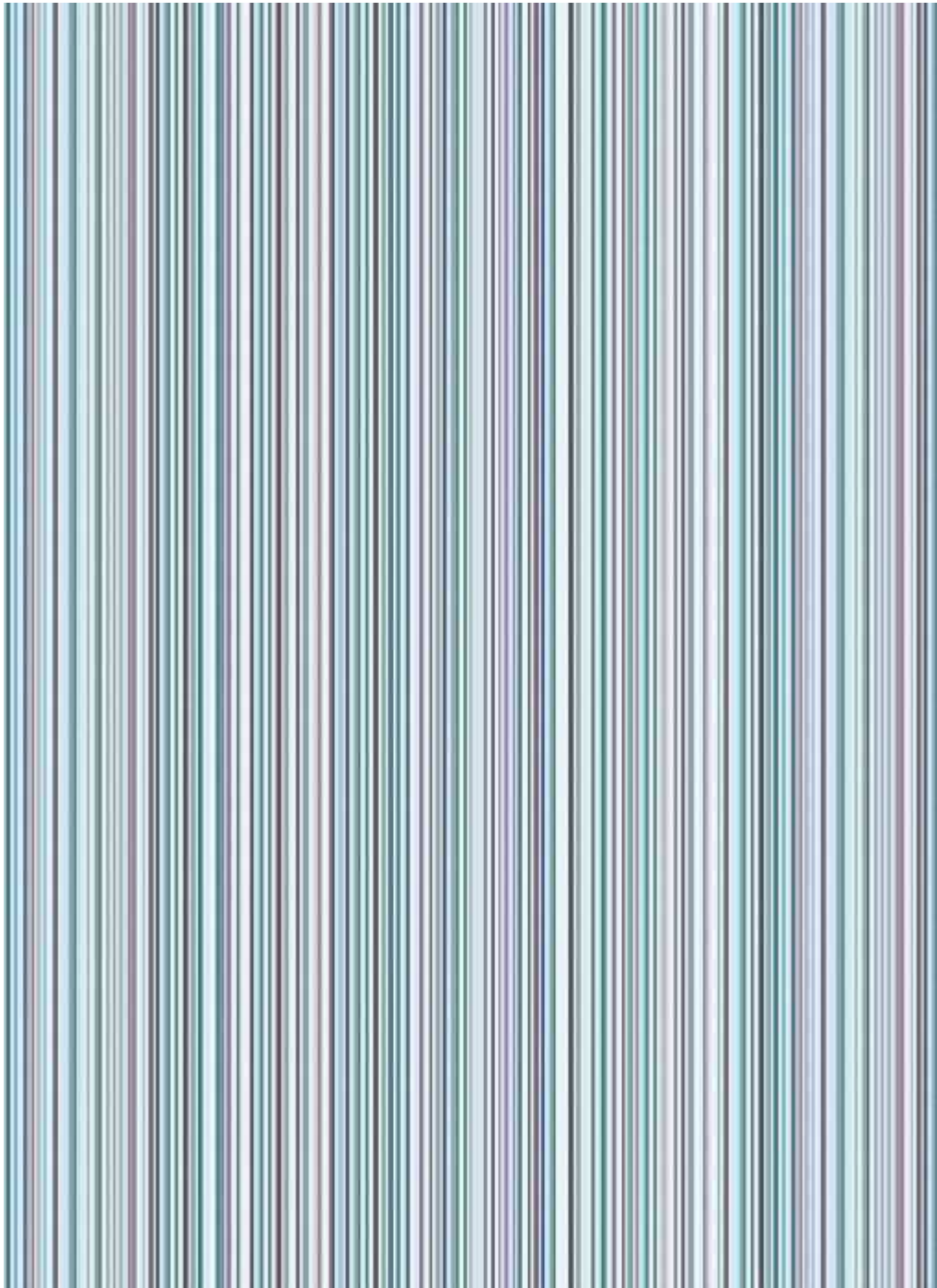
Apply adhesive evenly to the back of the wallpaper, fold and leave it for 5-10 minutes, and let the cloth absorb the adhesive completely. For heavy wallpaper, you can also brush adhesive directly to the wall and wait 5-10 minutes before hanging.

Hanging :

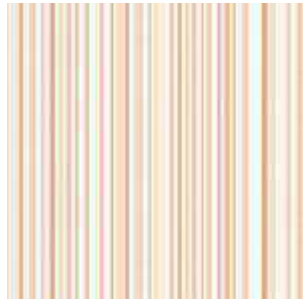
Start to hang from a corner and use a plumb line to ensure the wallpaper is straight and not leaning to one side, if the corner you started from is not straight, use a wiper board to smooth the wallpaper evenly and gently to remove any bubbles. For heavier wallpaper, use a strong glue for the seams. When applying the second strip, it should be applied to edge of the previous one and make sure the design is matched. For plain wallpapers there is no need to match. Overlap the two strips and use a sharp knife to cut in the middle. To make the cutting line straight, use a steel ruler.



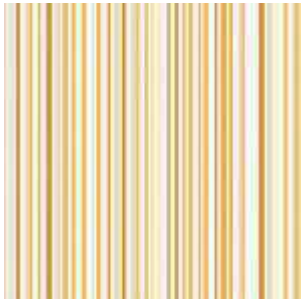
Designed in USA



W217-1



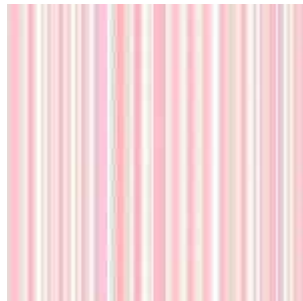
W217-2



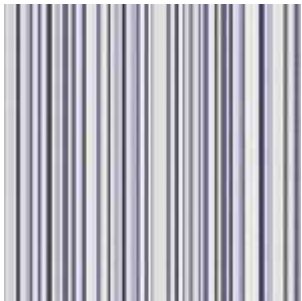
W217-3



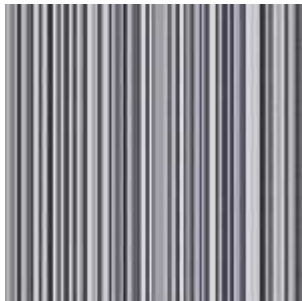
W217-4



W217-5



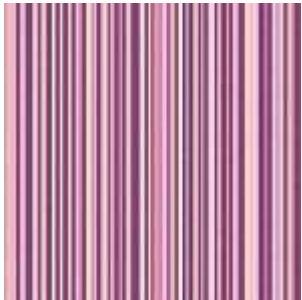
W217-6



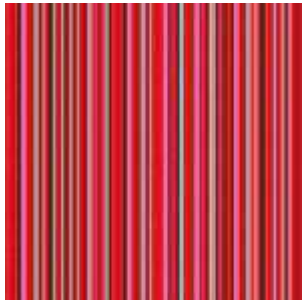
W217-7



W217-8



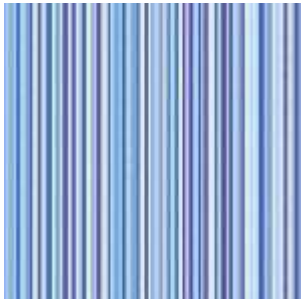
W217-9



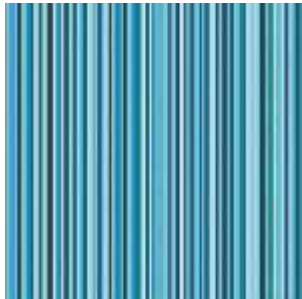
W217-10



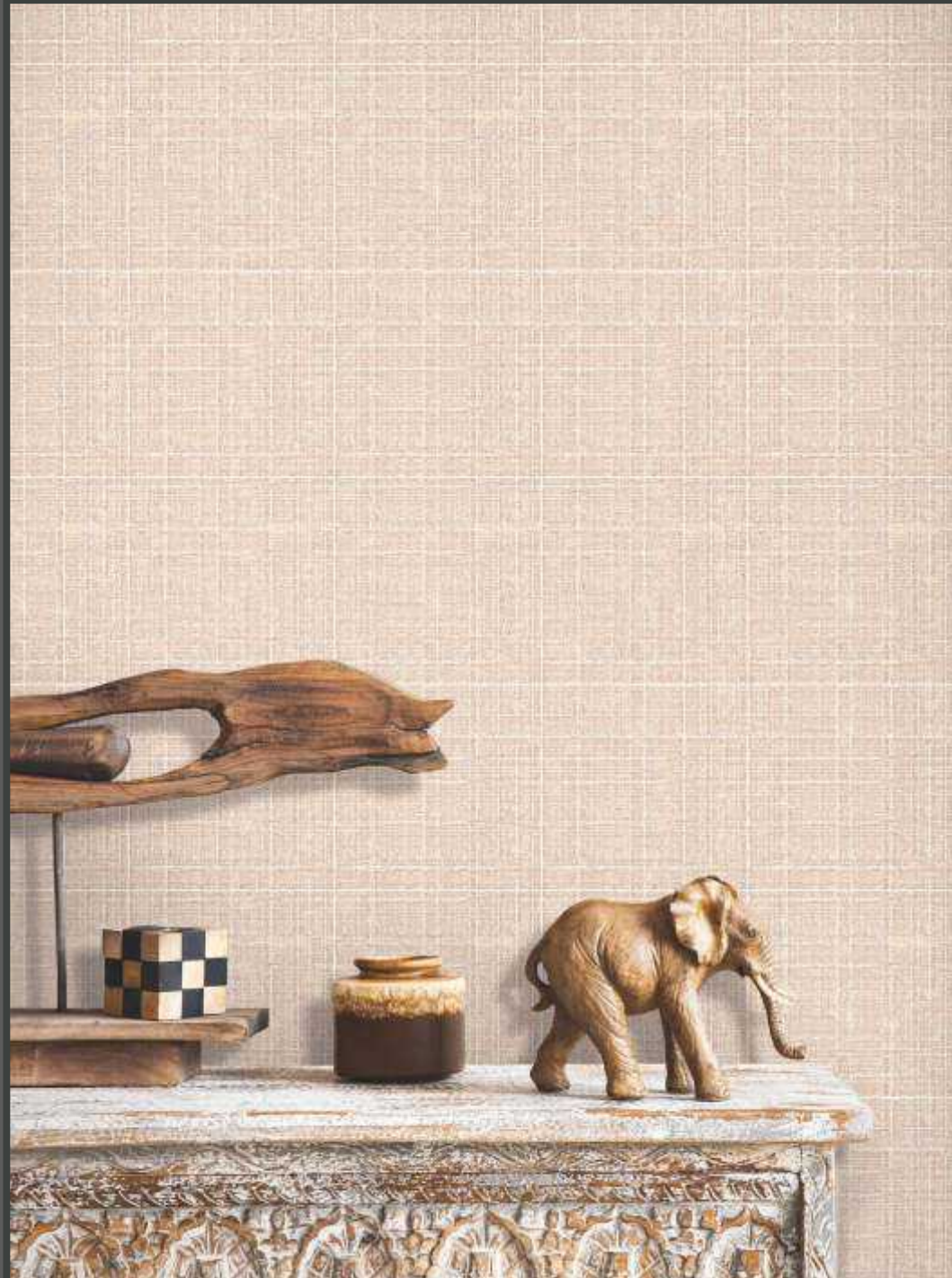
W217-11



W217-12



W217-13



WALL INDEX™ 52" / 54" VINYL WALLCOVERINGS

JINOBA

WALL INDEX™ VINYL WALL COVERINGS

JINOBA

Product Specifications

Type II, Medium Weight, Class A, Vinyl Coated	
Fabric Backed Wallcovering	
Width	: 52"/54" (132 cm/137cm)
Total Weight	: 15.0.oz./lin.yard - 466 gr/lin-meter
Backing	: Woven Cotton Backing
Fire Rated	: Class - "A" Tested In Accordance ASTM E-84 Tunnel Test
Tensile Breaking Strength	: 80X75 Pounds
Flame Spread	: 20
Smoke Developed	: 25
Pattern Match	: Repeat 4.65 inches
Packaging	: 50 Meter Bolts



US Classification : ASTM-E84 Class - A

CHN Classification : GB8624-2012: Class B

EU Classification : EN 15102 : 2007+A1 : 2011



Anti Microbial Features:

Water based environmentally friendly inks, free of Cadmium. Mercury and Ozone depleting chemicals.

Wall Surface Preparations:

The wall surface must be clean, smooth, stable, even and all in one colour before hanging wallpaper. The wall should be dry enough with a maximum of 8% water absorption. If the other side of the wall is in a bathroom, the surface of the wall must be water proof. If the wall is wet of mouldy, the mould needs to be eliminated completely by brushing fungicide on it which will also make it moisture proof.

Adhesive Applying:

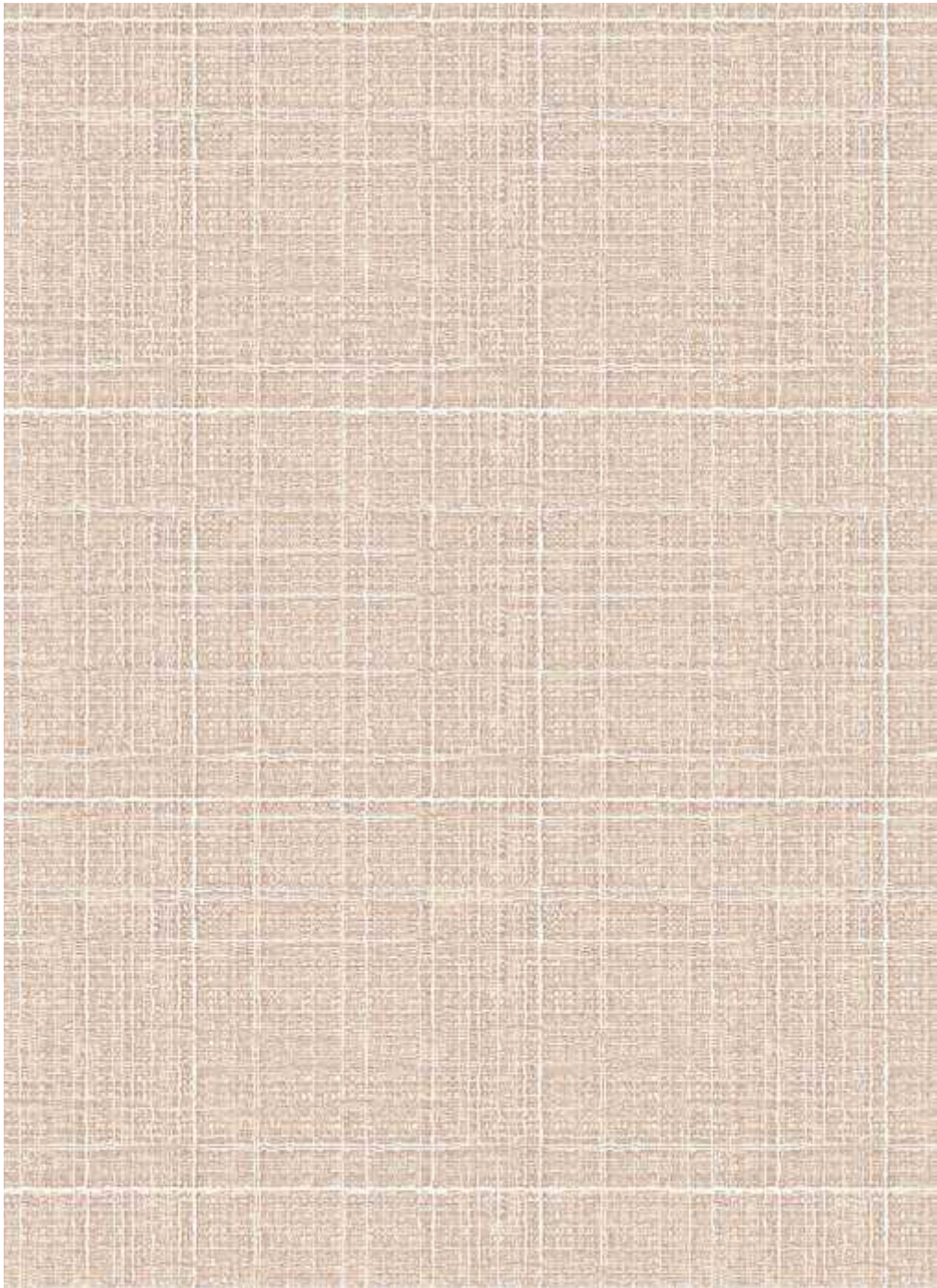
Apply adhesive evenly to the back of the wallpaper, fold and leave it for 5-10 minutes, and let the cloth absorb the adhesive completely. For heavy wallpaper, you can also brush adhesive directly to the wall and wait 5-10 minutes before hanging.

Hanging :

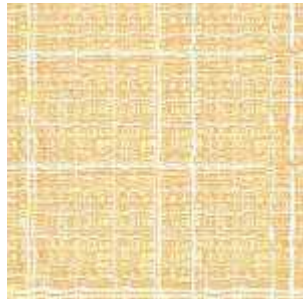
Start to hang from a corner and use a plumb line to ensure the wallpaper is straight and not leaning to one side, if the corner you started from is not straight, use a wiper board to smooth the wallpaper evenly and gently to remove any bubbles. For heavier wallpaper, use a strong glue for the seams. When applying the second strip, it should be applied to edge of the previous one and make sure the design is matched. For plain wallpapers there is no need to match. Overlap the two strips and use a sharp knife to cut in the middle. To make the cutting line straight, use a steel ruler.



Designed in USA



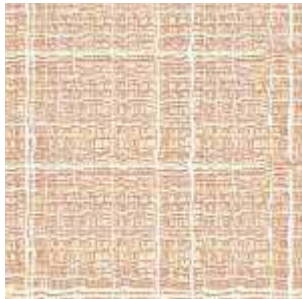
W218-1



W218-2



W218-3



W218-4



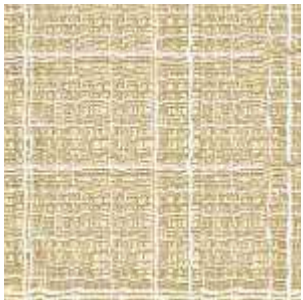
W218-5



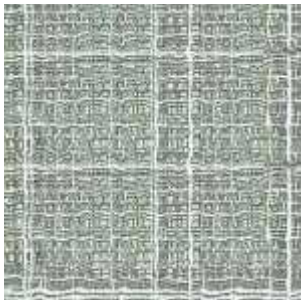
W218-6



W218-7



W218-8



W218-9



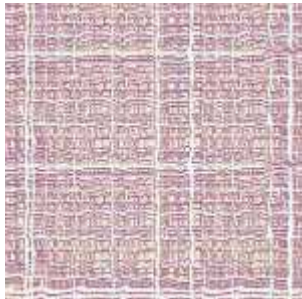
W218-10



W218-11



W218-12



W218-13



CAMBERG



WALL INDEX™
52" / 54" VINYL WALLCOVERINGS

CAMBERG

WALL INDEX™ VINYL WALL COVERINGS

CAMBERG

Product Specifications

Type II, Medium Weight, Class A, Vinyl Coated	
Fabric Backed Wallcovering	
Width	: 52"/54" (132 cm/137cm)
Total Weight	: 15.0.oz./lin.yard - 466 gr/lin-meter
Backing	: Woven Cotton Backing
Fire Rated	: Class - "A" Tested In Accordance ASTM E-84 Tunnel Test
Tensile Breaking Strength	: 80X75 Pounds
Flame Spread	: 20
Smoke Developed	: 25
Pattern Match	: Repeat 2.8 inches
Packaging	: 50 Meter Bolts



US Classification : ASTM-E84 Class - A

CHN Classification : GB8624-2012: Class B

EU Classification : EN 15102 : 2007+A1 : 2011



Anti Microbial Features:

Water based environmentally friendly inks, free of Cadmium. Mercury and Ozone depleting chemicals.

Wall Surface Preparations:

The wall surface must be clean, smooth, stable, even and all in one colour before hanging wallpaper. The wall should be dry enough with a maximum of 8% water absorption. If the other side of the wall is in a bathroom, the surface of the wall must be water proof. If the wall is wet of mouldy, the mould needs to be eliminated completely by brushing fungicide on it which will also make it moisture proof.

Adhesive Applying:

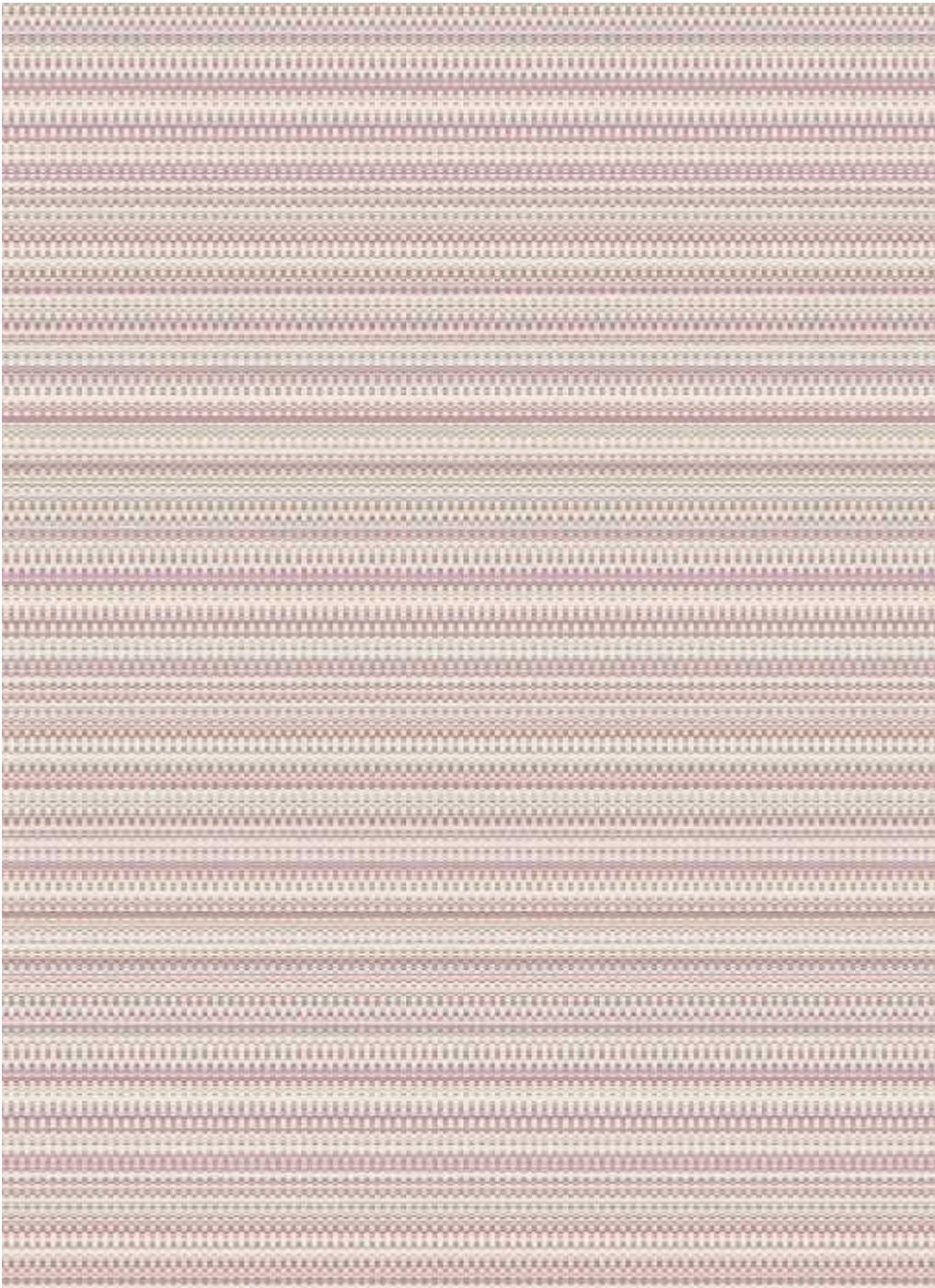
Apply adhesive evenly to the back of the wallpaper, fold and leave it for 5-10 minutes, and let the cloth absorb the adhesive completely. For heavy wallpaper, you can also brush adhesive directly to the wall and wait 5-10 minutes before hanging.

Hanging :

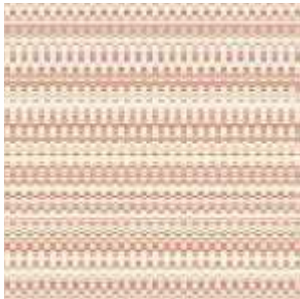
Start to hang from a corner and use a plumb line to ensure the wallpaper is straight and not leaning to one side, if the corner you started from is not straight, use a wiper board to smooth the wallpaper evenly and gently to remove any bubbles. For heavier wallpaper, use a strong glue for the seams. When applying the second strip, it should be applied to edge of the previous one and make sure the design is matched. For plain wallpapers there is no need to match. Overlap the two strips and use a sharp knife to cut in the middle. To make the cutting line straight, use a steel ruler.



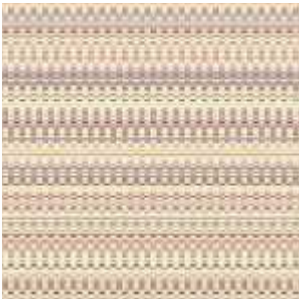
Designed in USA



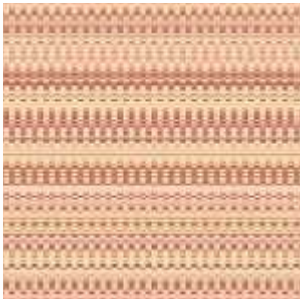
W219-1



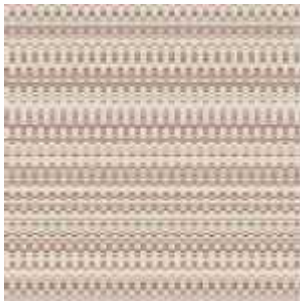
W219-2



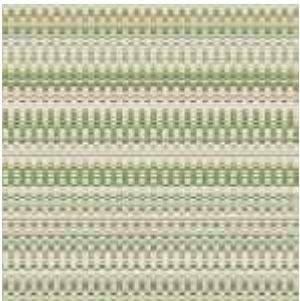
W219-3



W219-4



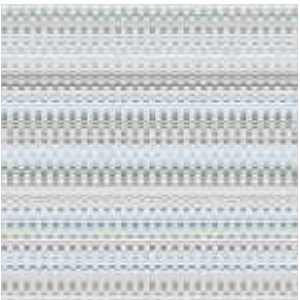
W219-5



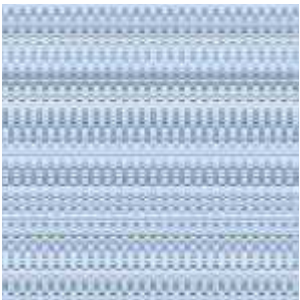
W219-6



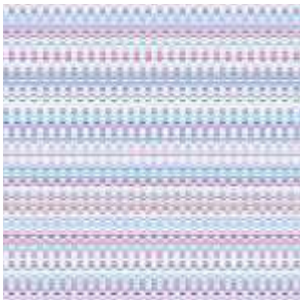
W219-7



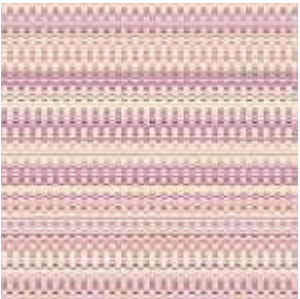
W219-8



W219-9



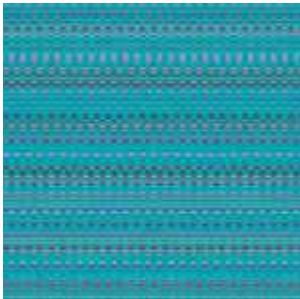
W219-10



W219-11



W219-12



W219-13



WALL INDEX™ 52" / 54" VINYL WALLCOVERINGS

MEXUS

WALL INDEX™ VINYL WALL COVERINGS

MEXUS

Product Specifications

Type II, Medium Weight, Class A, Vinyl Coated	
Fabric Backed Wallcovering	
Width	: 52"/54" (132 cm/137cm)
Total Weight	: 15.0.oz./lin.yard - 466 gr/lin-meter
Backing	: Woven Cotton Backing
Fire Rated	: Class - "A" Tested In Accordance ASTM E-84 Tunnel Test
Tensile Breaking Strength	: 80X75 Pounds
Flame Spread	: 20
Smoke Developed	: 25
Pattern Match	: Repeat 2 inches
Packaging	: 50 Meter Bolts



US Classification : ASTM-E84 Class - A

CHN Classification : GB8624-2012: Class B

EU Classification : EN 15102 : 2007+A1 : 2011



Anti Microbial Features:

Water based environmentally friendly inks, free of Cadmium. Mercury and Ozone depleting chemicals.

Wall Surface Preparations:

The wall surface must be clean, smooth, stable, even and all in one colour before hanging wallpaper. The wall should be dry enough with a maximum of 8% water absorption. If the other side of the wall is in a bathroom, the surface of the wall must be water proof. If the wall is wet of mouldy, the mould needs to be eliminated completely by brushing fungicide on it which will also make it moisture proof.

Adhesive Applying:

Apply adhesive evenly to the back of the wallpaper, fold and leave it for 5-10 minutes, and let the cloth absorb the adhesive completely. For heavy wallpaper, you can also brush adhesive directly to the wall and wait 5-10 minutes before hanging.

Hanging :

Start to hang from a corner and use a plumb line to ensure the wallpaper is straight and not leaning to one side, if the corner you started from is not straight, use a wiper board to smooth the wallpaper evenly and gently to remove any bubbles. For heavier wallpaper, use a strong glue for the seams. When applying the second strip, it should be applied to edge of the previous one and make sure the design is matched. For plain wallpapers there is no need to match. Overlap the two strips and use a sharp knife to cut in the middle. To make the cutting line straight, use a steel ruler.



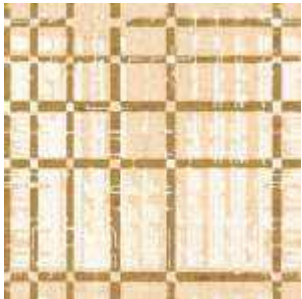
Designed in USA



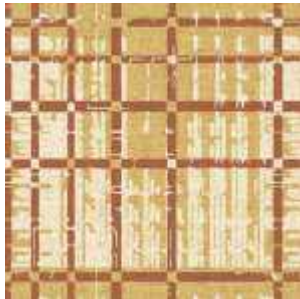
W220-1



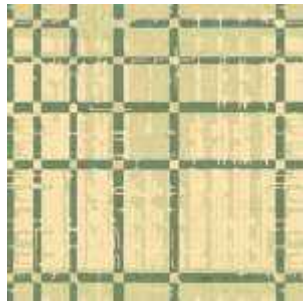
W220-2



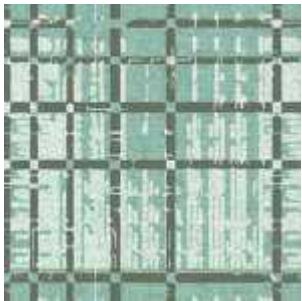
W220-3



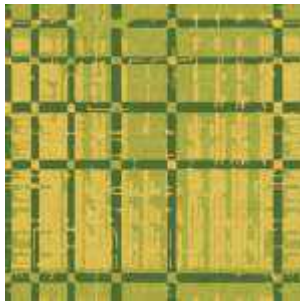
W220-4



W220-5



W220-6



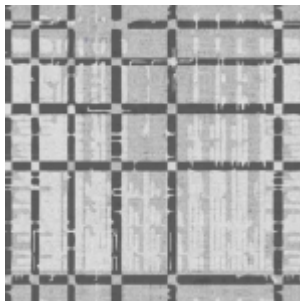
W220-7



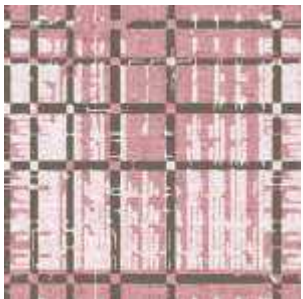
W220-8



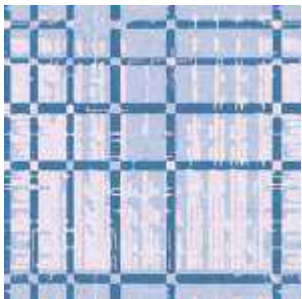
W220-9



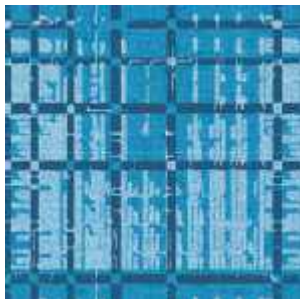
W220-10



W220-11



W220-12



W220-13



EMBROSIA



WALL INDEX™
52" / 54" VINYL WALLCOVERINGS

EMBROSIA

WALL INDEX™ VINYL WALL COVERINGS

EMBROSIA

Product Specifications

Type II, Medium Weight, Class A, Vinyl Coated	
Fabric Backed Wallcovering	
Width	: 52"/54" (132 cm/137cm)
Total Weight	: 15.0.oz./lin.yard - 466 gr/lin-meter
Backing	: Woven Cotton Backing
Fire Rated	: Class - "A" Tested In Accordance ASTM E-84 Tunnel Test
Tensile Breaking Strength	: 80X75 Pounds
Flame Spread	: 20
Smoke Developed	: 25
Pattern Match	: Repeat 3.6 inches
Packaging	: 50 Meter Bolts



US Classification : ASTM-E84 Class - A

CHN Classification : GB8624-2012: Class B

EU Classification : EN 15102 : 2007+A1 : 2011



Anti Microbial Features:

Water based environmentally friendly inks, free of Cadmium. Mercury and Ozone depleting chemicals.

Wall Surface Preparations:

The wall surface must be clean, smooth, stable, even and all in one colour before hanging wallpaper. The wall should be dry enough with a maximum of 8% water absorption. If the other side of the wall is in a bathroom, the surface of the wall must be water proof. If the wall is wet of mouldy, the mould needs to be eliminated completely by brushing fungicide on it which will also make it moisture proof.

Adhesive Applying:

Apply adhesive evenly to the back of the wallpaper, fold and leave it for 5-10 minutes, and let the cloth absorb the adhesive completely. For heavy wallpaper, you can also brush adhesive directly to the wall and wait 5-10 minutes before hanging.

Hanging :

Start to hang from a corner and use a plumb line to ensure the wallpaper is straight and not leaning to one side, if the corner you started from is not straight, use a wiper board to smooth the wallpaper evenly and gently to remove any bubbles. For heavier wallpaper, use a strong glue for the seams. When applying the second strip, it should be applied to edge of the previous one and make sure the design is matched. For plain wallpapers there is no need to match. Overlap the two strips and use a sharp knife to cut in the middle. To make the cutting line straight, use a steel ruler.



Designed in USA



W221-1



W221-2



W221-3



W221-4



W221-5



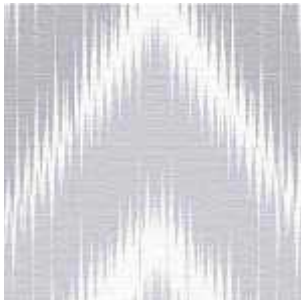
W221-6



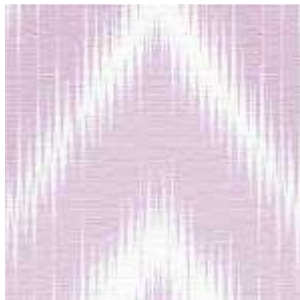
W221-7



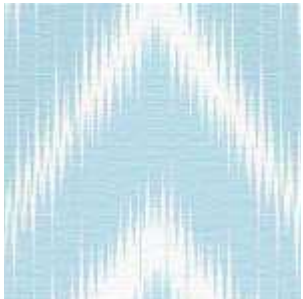
W221-8



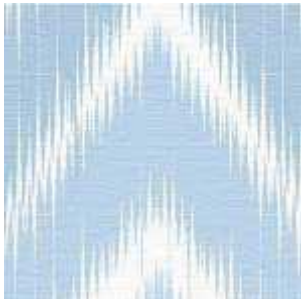
W221-9



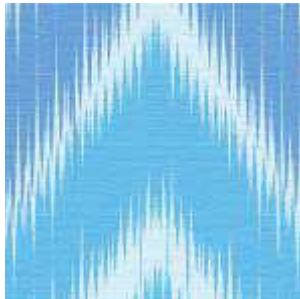
W221-10



W221-11



W221-12



W221-13



WALL INDEX™ 52" / 54" VINYL WALLCOVERINGS

GEOLINE

WALL INDEX™ VINYL WALL COVERINGS

GEOLINE

Product Specifications

Type II, Medium Weight, Class A, Vinyl Coated	
Fabric Backed Wallcovering	
Width	: 52"/54" (132 cm/137cm)
Total Weight	: 15.0.oz./lin.yard - 466 gr/lin-meter
Backing	: Woven Cotton Backing
Fire Rated	: Class - "A" Tested In Accordance ASTM E-84 Tunnel Test
Tensile Breaking Strength	: 80X75 Pounds
Flame Spread	: 20
Smoke Developed	: 25
Pattern Match	: Repeat 5.6 inches
Packaging	: 50 Meter Bolts



US Classification : ASTM-E84 Class - A

CHN Classification : GB8624-2012: Class B

EU Classification : EN 15102 : 2007+A1 : 2011



Anti Microbial Features:

Water based environmentally friendly inks, free of Cadmium. Mercury and Ozone depleting chemicals.

Wall Surface Preparations:

The wall surface must be clean, smooth, stable, even and all in one colour before hanging wallpaper. The wall should be dry enough with a maximum of 8% water absorption. If the other side of the wall is in a bathroom, the surface of the wall must be water proof. If the wall is wet of mouldy, the mould needs to be eliminated completely by brushing fungicide on it which will also make it moisture proof.

Adhesive Applying:

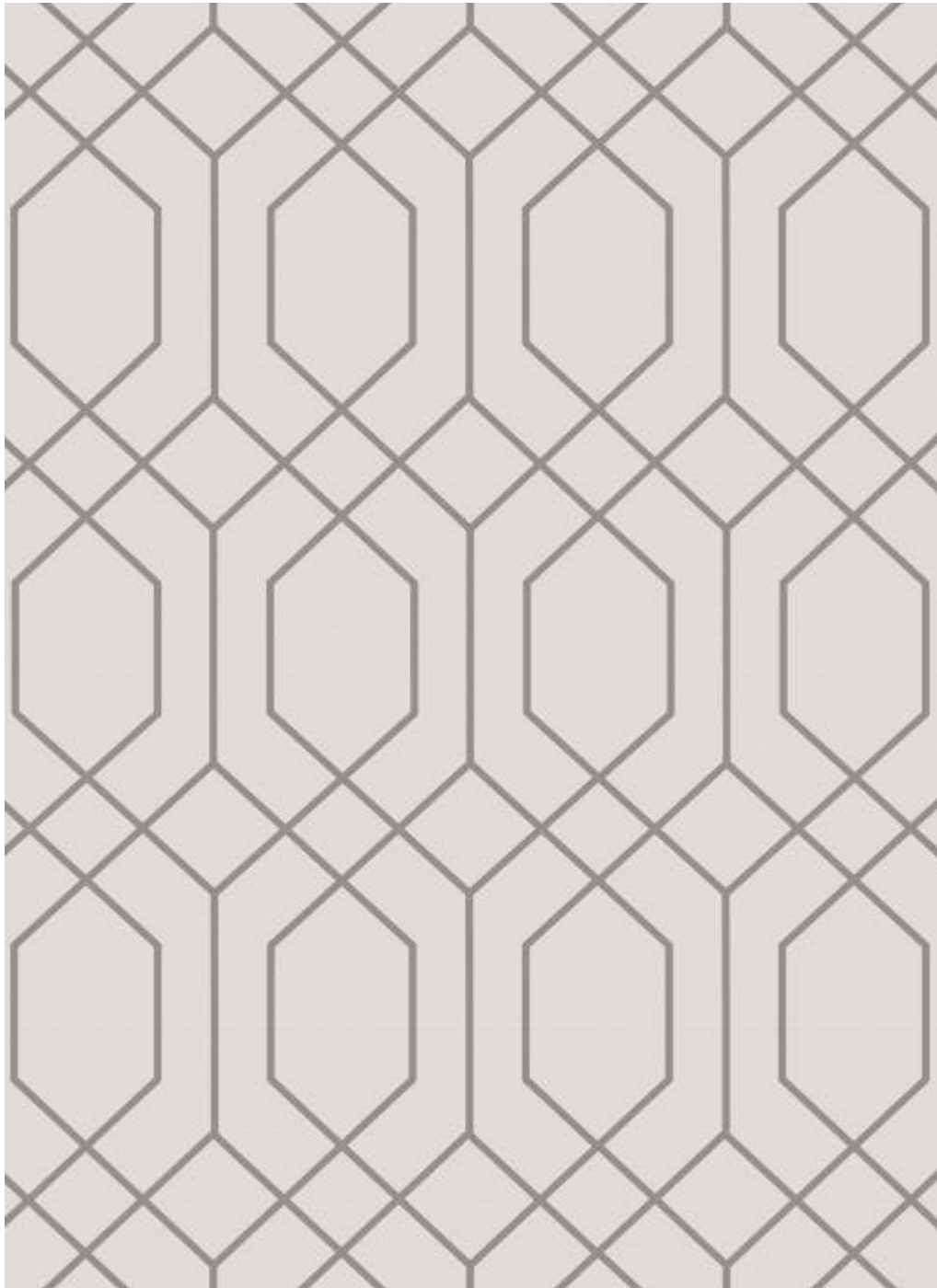
Apply adhesive evenly to the back of the wallpaper, fold and leave it for 5-10 minutes, and let the cloth absorb the adhesive completely. For heavy wallpaper, you can also brush adhesive directly to the wall and wait 5-10 minutes before hanging.

Hanging :

Start to hang from a corner and use a plumb line to ensure the wallpaper is straight and not leaning to one side, if the corner you started from is not straight, use a wiper board to smooth the wallpaper evenly and gently to remove any bubbles. For heavier wallpaper, use a strong glue for the seams. When applying the second strip, it should be applied to edge of the previous one and make sure the design is matched. For plain wallpapers there is no need to match. Overlap the two strips and use a sharp knife to cut in the middle. To make the cutting line straight, use a steel ruler.



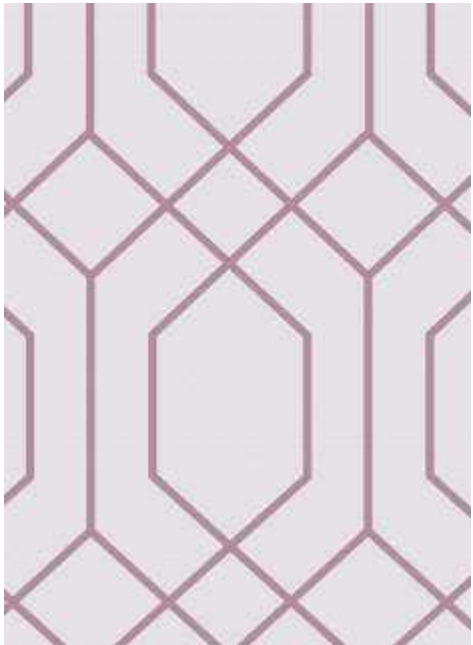
Designed in USA



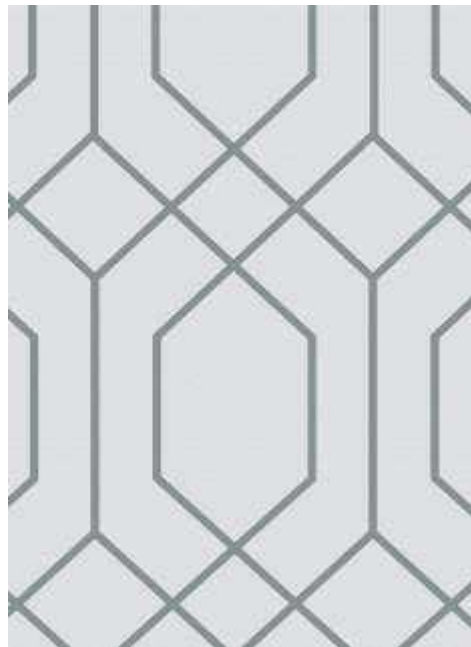
W222-1



W222-2



W222-3



W222-4



W222-5



WALL INDEX™ 52" / 54" VINYL WALLCOVERINGS

NEXBER

WALL INDEX™ VINYL WALL COVERINGS

NEXBER

Product Specifications

Type II, Medium Weight, Class A, Vinyl Coated	
Fabric Backed Wallcovering	
Width	: 52"/54" (132 cm/137cm)
Total Weight	: 15.0.oz./lin.yard - 466 gr/lin-meter
Backing	: Woven Cotton Backing
Fire Rated	: Class - "A" Tested In Accordance ASTM E-84 Tunnel Test
Tensile Breaking Strength	: 80X75 Pounds
Flame Spread	: 20
Smoke Developed	: 25
Pattern Match	: Repeat 3.9 inches
Packaging	: 50 Meter Bolts



US Classification : ASTM-E84 Class - A

CHN Classification : GB8624-2012: Class B

EU Classification : EN 15102 : 2007+A1 : 2011



Anti Microbial Features:

Water based environmentally friendly inks, free of Cadmium. Mercury and Ozone depleting chemicals.

Wall Surface Preparations:

The wall surface must be clean, smooth, stable, even and all in one colour before hanging wallpaper. The wall should be dry enough with a maximum of 8% water absorption. If the other side of the wall is in a bathroom, the surface of the wall must be water proof. If the wall is wet of mouldy, the mould needs to be eliminated completely by brushing fungicide on it which will also make it moisture proof.

Adhesive Applying:

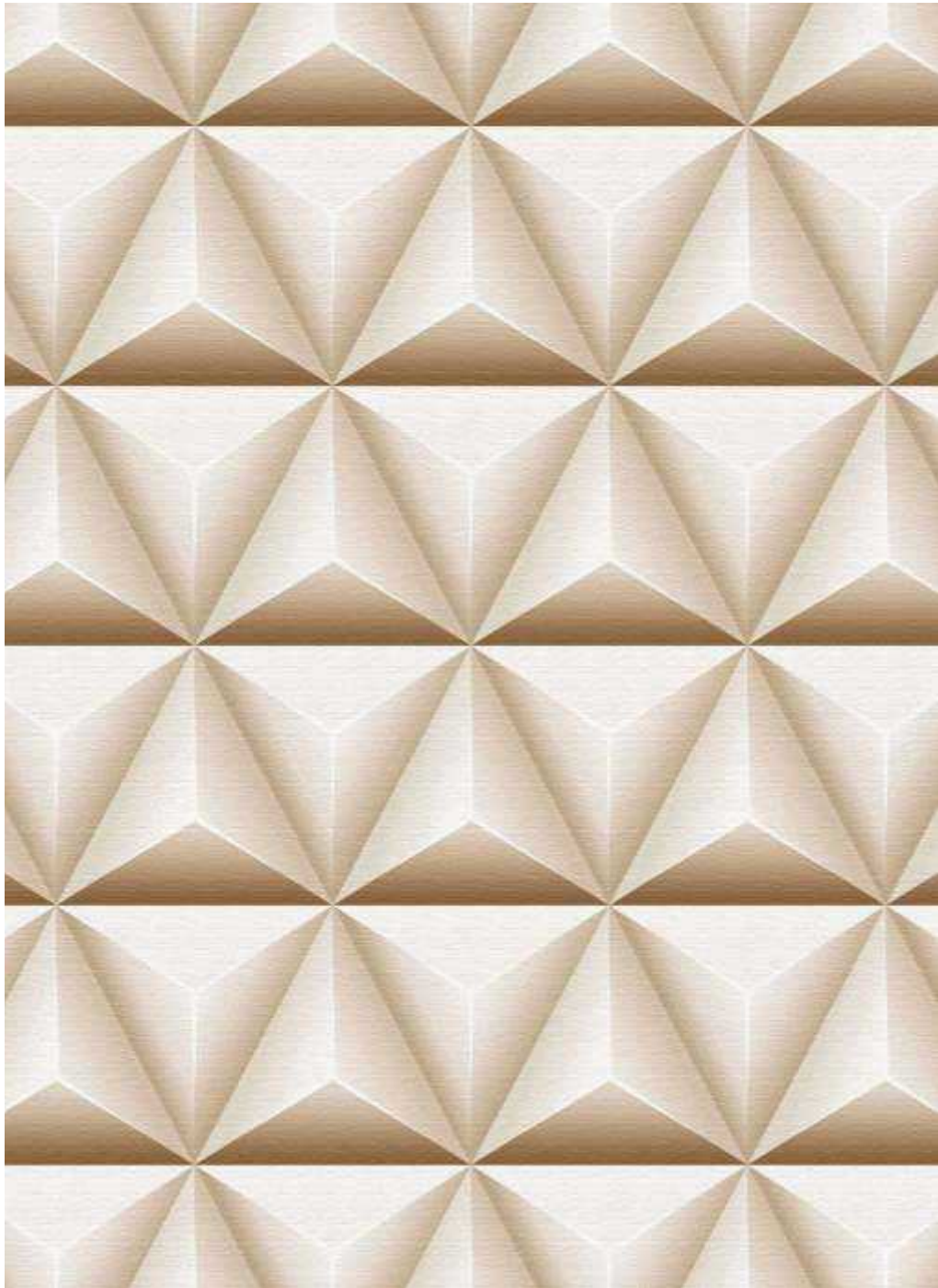
Apply adhesive evenly to the back of the wallpaper, fold and leave it for 5-10 minutes, and let the cloth absorb the adhesive completely. For heavy wallpaper, you can also brush adhesive directly to the wall and wait 5-10 minutes before hanging.

Hanging :

Start to hang from a corner and use a plumb line to ensure the wallpaper is straight and not leaning to one side, if the corner you started from is not straight, use a wiper board to smooth the wallpaper evenly and gently to remove any bubbles. For heavier wallpaper, use a strong glue for the seams. When applying the second strip, it should be applied to edge of the previous one and make sure the design is matched. For plain wallpapers there is no need to match. Overlap the two strips and use a sharp knife to cut in the middle. To make the cutting line straight, use a steel ruler.



Designed in USA



W223-1



W223-2



W223-3



W223-4



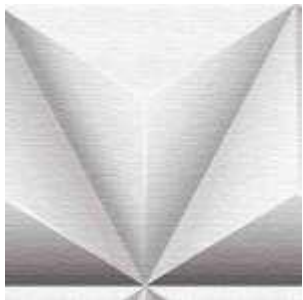
W223-5



W223-6



W223-7



W223-8



W223-9



W223-10



W223-11



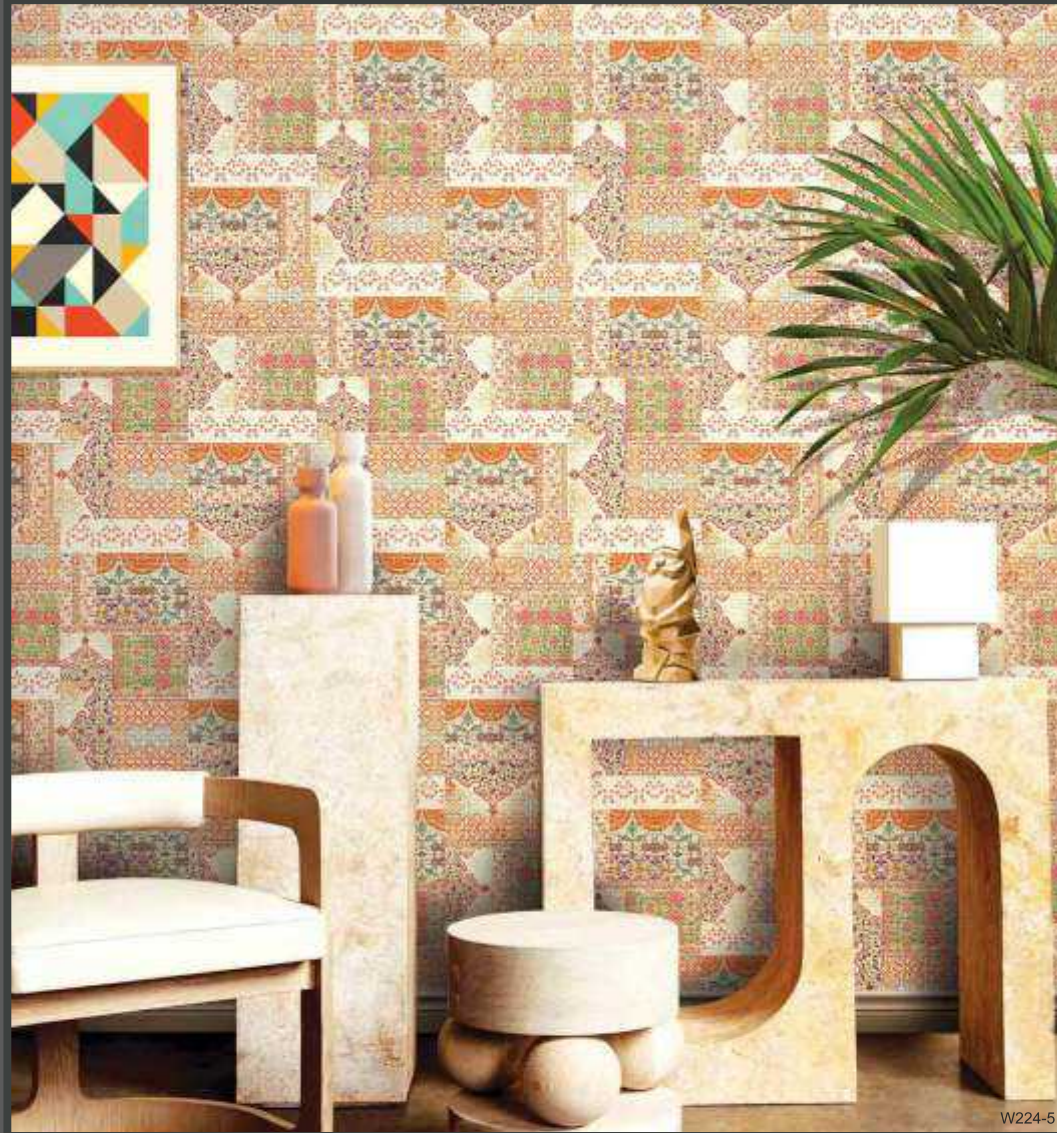
W223-12



W223-13



PITHER



WALL INDEX™
52" / 54" VINYL WALLCOVERINGS



W224-1

W224-2

W224-3

W224-4

PITHER

WALL INDEX™ VINYL WALL COVERINGS

PITHER

Product Specifications

Type II, Medium Weight, Class A, Vinyl Coated

Fabric Backed Wallcovering

Width : 52"/54" (132 cm/137cm)
Total Weight : 15.0.oz./lin.yard - 466 gr/lin-meter
Backing : Woven Cotton Backing
Fire Rated : Class - "A" Tested In Accordance
ASTM E-84 Tunnel Test

Tensile Breaking Strength : 80X75 Pounds
Flame Spread : 20
Smoke Developed : 25
Pattern Match : Repeat 17 inches
Packaging : 50 Meter Bolts



US Classification : ASTM-E84 Class - A

CHN Classification : GB8624-2012: Class B

EU Classification : EN 15102 : 2007+A1 : 2011



Anti Microbial Features:

Water based environmentally friendly inks, free of Cadmium. Mercury and Ozone depleting chemicals.

Wall Surface Preparations:

The wall surface must be clean, smooth, stable, even and all in one colour before hanging wallpaper. The wall should be dry enough with a maximum of 8% water absorption. If the other side of the wall is in a bathroom, the surface of the wall must be water proof. If the wall is wet of mouldy, the mould needs to be eliminated completely by brushing fungicide on it which will also make it moisture proof.

Adhesive Applying:

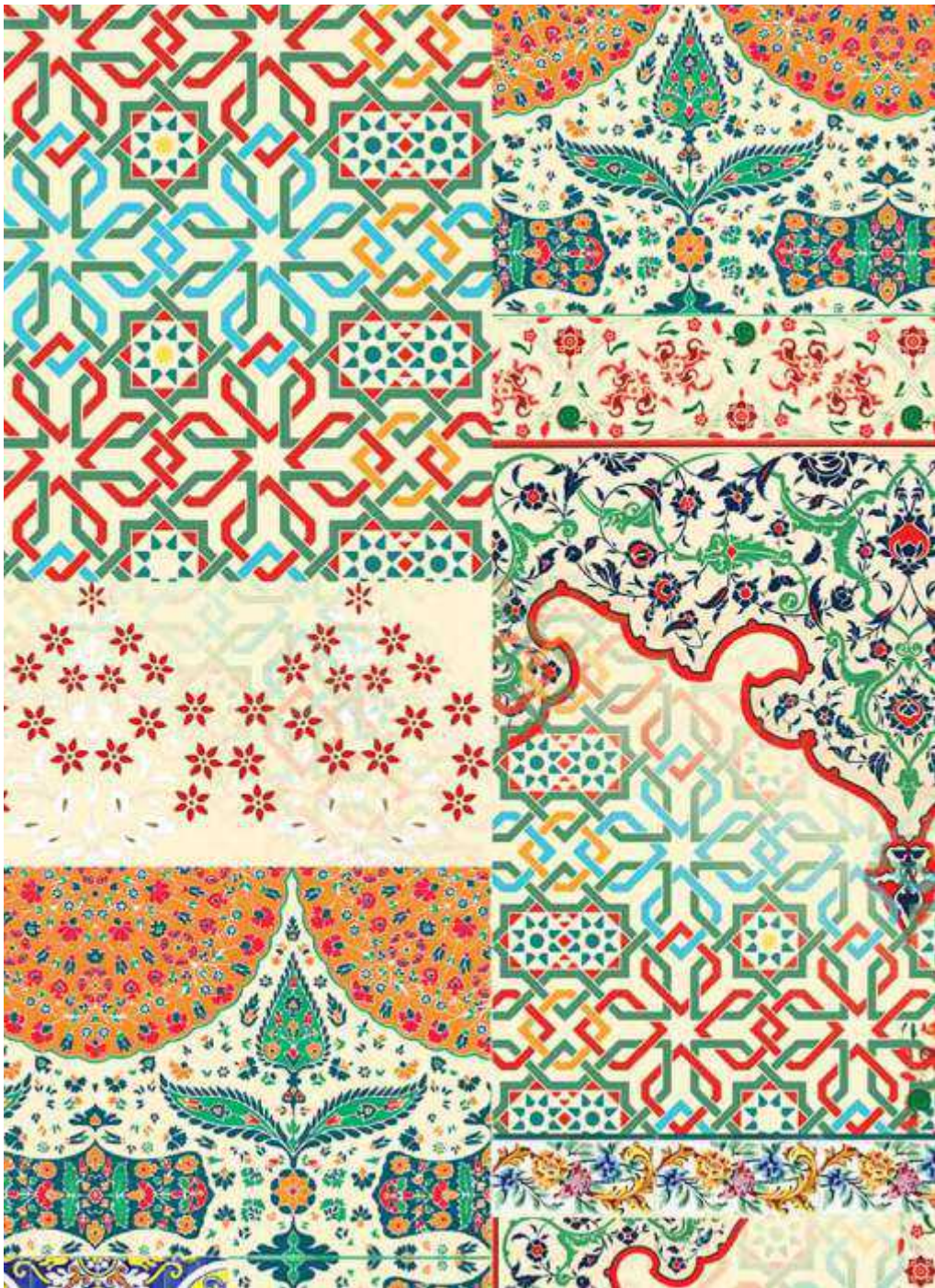
Apply adhesive evenly to the back of the wallpaper, fold and leave it for 5-10 minutes, and let the cloth absorb the adhesive completely. For heavy wallpaper, you can also brush adhesive directly to the wall and wait 5-10 minutes before hanging.

Hanging :

Start to hang from a corner and use a plumb line to ensure the wallpaper is straight and not leaning to one side, if the corner you started from is not straight, use a wiper board to smooth the wallpaper evenly and gently to remove any bubbles. For heavier wallpaper, use a strong glue for the seams. When applying the second strip, it should be applied to edge of the previous one and make sure the design is matched. For plain wallpapers there is no need to match. Overlap the two strips and use a sharp knife to cut in the middle. To make the cutting line straight, use a steel ruler.



Designed in USA



W224-1



W224-2



W224-3



W224-4



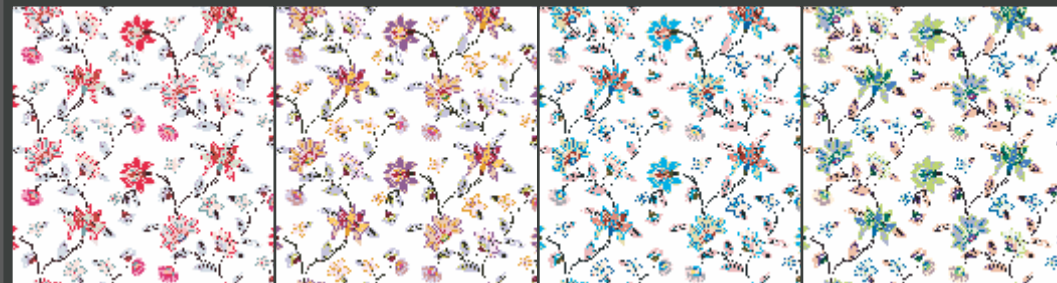
W224-5



HERTIG



W225-1



W225-2

W225-3

W225-4

W225-5

WALL INDEXTM 52" / 54" VINYL WALLCOVERINGS

HERTIG

WALL INDEXTM VINYL WALL COVERINGS

HERTIG

Product Specifications

Type II, Medium Weight, Class A, Vinyl Coated	
Fabric Backed Wallcovering	
Width	: 52"/54" (132 cm/137cm)
Total Weight	: 15.0.oz./lin.yard - 466 gr/lin-meter
Backing	: Woven Cotton Backing
Fire Rated	: Class - "A" Tested In Accordance ASTM E-84 Tunnel Test
Tensile Breaking Strength	: 80X75 Pounds
Flame Spread	: 20
Smoke Developed	: 25
Pattern Match	: Repeat 8.5 inches
Packaging	: 50 Meter Bolts



US Classification : ASTM-E84 Class - A

CHN Classification : GB8624-2012: Class B

EU Classification : EN 15102 : 2007+A1 : 2011



Anti Microbial Features:

Water based environmentally friendly inks, free of Cadmium. Mercury and Ozone depleting chemicals.

Wall Surface Preparations:

The wall surface must be clean, smooth, stable, even and all in one colour before hanging wallpaper. The wall should be dry enough with a maximum of 8% water absorption. If the other side of the wall is in a bathroom, the surface of the wall must be water proof. If the wall is wet of mouldy, the mould needs to be eliminated completely by brushing fungicide on it which will also make it moisture proof.

Adhesive Applying:

Apply adhesive evenly to the back of the wallpaper, fold and leave it for 5-10 minutes, and let the cloth absorb the adhesive completely. For heavy wallpaper, you can also brush adhesive directly to the wall and wait 5-10 minutes before hanging.

Hanging :

Start to hang from a corner and use a plumb line to ensure the wallpaper is straight and not leaning to one side, if the corner you started from is not straight, use a wiper board to smooth the wallpaper evenly and gently to remove any bubbles. For heavier wallpaper, use a strong glue for the seams. When applying the second strip, it should be applied to edge of the previous one and make sure the design is matched. For plain wallpapers there is no need to match. Overlap the two strips and use a sharp knife to cut in the middle. To make the cutting line straight, use a steel ruler.



Designed in USA



W225-1



W225-2



W225-3



W225-4



W225-5



FLOWMARK



WALL INDEXTM 52" / 54" VINYL WALLCOVERINGS

FLOWMARK

WALL INDEXTM VINYL WALL COVERINGS

FLOWMARK

Product Specifications

Type II, Medium Weight, Class A, Vinyl Coated	
Fabric Backed Wallcovering	
Width	: 52"/54" (132 cm/137cm)
Total Weight	: 15.0.oz./lin.yard - 466 gr/lin-meter
Backing	: Woven Cotton Backing
Fire Rated	: Class - "A" Tested In Accordance ASTM E-84 Tunnel Test
Tensile Breaking Strength	: 80X75 Pounds
Flame Spread	: 20
Smoke Developed	: 25
Pattern Match	: Repeat 18 inches
Packaging	: 50 Meter Bolts



US Classification : ASTM-E84 Class - A

CHN Classification : GB8624-2012: Class B

EU Classification : EN 15102 : 2007+A1 : 2011



Anti Microbial Features:

Water based environmentally friendly inks, free of Cadmium. Mercury and Ozone depleting chemicals.

Wall Surface Preparations:

The wall surface must be clean, smooth, stable, even and all in one colour before hanging wallpaper. The wall should be dry enough with a maximum of 8% water absorption. If the other side of the wall is in a bathroom, the surface of the wall must be water proof. If the wall is wet of mouldy, the mould needs to be eliminated completely by brushing fungicide on it which will also make it moisture proof.

Adhesive Applying:

Apply adhesive evenly to the back of the wallpaper, fold and leave it for 5-10 minutes, and let the cloth absorb the adhesive completely. For heavy wallpaper, you can also brush adhesive directly to the wall and wait 5-10 minutes before hanging.

Hanging :

Start to hang from a corner and use a plumb line to ensure the wallpaper is straight and not leaning to one side, if the corner you started from is not straight, use a wiper board to smooth the wallpaper evenly and gently to remove any bubbles. For heavier wallpaper, use a strong glue for the seams. When applying the second strip, it should be applied to edge of the previous one and make sure the design is matched. For plain wallpapers there is no need to match. Overlap the two strips and use a sharp knife to cut in the middle. To make the cutting line straight, use a steel ruler.



Designed in USA



W226-1



W226-2



W226-3



W226-4



W226-5



VANOVA



WALL INDEX™ 52" / 54" VINYL WALLCOVERINGS

VANOVA

WALL INDEX™ VINYL WALL COVERINGS

VANOVA

Product Specifications

Type II, Medium Weight, Class A, Vinyl Coated	
Fabric Backed Wallcovering	
Width	: 52"/54" (132 cm/137cm)
Total Weight	: 15.0.oz./lin.yard - 466 gr/lin-meter
Backing	: Woven Cotton Backing
Fire Rated	: Class - "A" Tested In Accordance ASTM E-84 Tunnel Test
Tensile Breaking Strength	: 80X75 Pounds
Flame Spread	: 20
Smoke Developed	: 25
Pattern Match	: Repeat 12 inches
Packaging	: 50 Meter Bolts



US Classification : ASTM-E84 Class - A

CHN Classification : GB8624-2012: Class B

EU Classification : EN 15102 : 2007+A1 : 2011



Anti Microbial Features:

Water based environmentally friendly inks, free of Cadmium. Mercury and Ozone depleting chemicals.

Wall Surface Preparations:

The wall surface must be clean, smooth, stable, even and all in one colour before hanging wallpaper. The wall should be dry enough with a maximum of 8% water absorption. If the other side of the wall is in a bathroom, the surface of the wall must be water proof. If the wall is wet of mouldy, the mould needs to be eliminated completely by brushing fungicide on it which will also make it moisture proof.

Adhesive Applying:

Apply adhesive evenly to the back of the wallpaper, fold and leave it for 5-10 minutes, and let the cloth absorb the adhesive completely. For heavy wallpaper, you can also brush adhesive directly to the wall and wait 5-10 minutes before hanging.

Hanging :

Start to hang from a corner and use a plumb line to ensure the wallpaper is straight and not leaning to one side, if the corner you started from is not straight, use a wiper board to smooth the wallpaper evenly and gently to remove any bubbles. For heavier wallpaper, use a strong glue for the seams. When applying the second strip, it should be applied to edge of the previous one and make sure the design is matched. For plain wallpapers there is no need to match. Overlap the two strips and use a sharp knife to cut in the middle. To make the cutting line straight, use a steel ruler.



Designed in USA



W227-1



W227-2



W227-3



W227-4



W227-5



BRIKSO



WALL INDEX™ 52" / 54" VINYL WALLCOVERINGS

BRIKSO

WALL INDEX™ VINYL WALL COVERINGS

BRIKSO

Product Specifications

Type II, Medium Weight, Class A, Vinyl Coated	
Fabric Backed Wallcovering	
Width	: 52"/54" (132 cm/137cm)
Total Weight	: 15.0.oz./lin.yard - 466 gr/lin-meter
Backing	: Woven Cotton Backing
Fire Rated	: Class - "A" Tested In Accordance ASTM E-84 Tunnel Test
Tensile Breaking Strength	: 80X75 Pounds
Flame Spread	: 20
Smoke Developed	: 25
Pattern Match	: Repeat 11 inches
Packaging	: 50 Meter Bolts



US Classification : ASTM-E84 Class - A

CHN Classification : GB8624-2012: Class B

EU Classification : EN 15102 : 2007+A1 : 2011



Anti Microbial Features:

Water based environmentally friendly inks, free of Cadmium. Mercury and Ozone depleting chemicals.

Wall Surface Preparations:

The wall surface must be clean, smooth, stable, even and all in one colour before hanging wallpaper. The wall should be dry enough with a maximum of 8% water absorption. If the other side of the wall is in a bathroom, the surface of the wall must be water proof. If the wall is wet of mouldy, the mould needs to be eliminated completely by brushing fungicide on it which will also make it moisture proof.

Adhesive Applying:

Apply adhesive evenly to the back of the wallpaper, fold and leave it for 5-10 minutes, and let the cloth absorb the adhesive completely. For heavy wallpaper, you can also brush adhesive directly to the wall and wait 5-10 minutes before hanging.

Hanging :

Start to hang from a corner and use a plumb line to ensure the wallpaper is straight and not leaning to one side, if the corner you started from is not straight, use a wiper board to smooth the wallpaper evenly and gently to remove any bubbles. For heavier wallpaper, use a strong glue for the seams. When applying the second strip, it should be applied to edge of the previous one and make sure the design is matched. For plain wallpapers there is no need to match. Overlap the two strips and use a sharp knife to cut in the middle. To make the cutting line straight, use a steel ruler.



Designed in USA



W228-1



W228-2



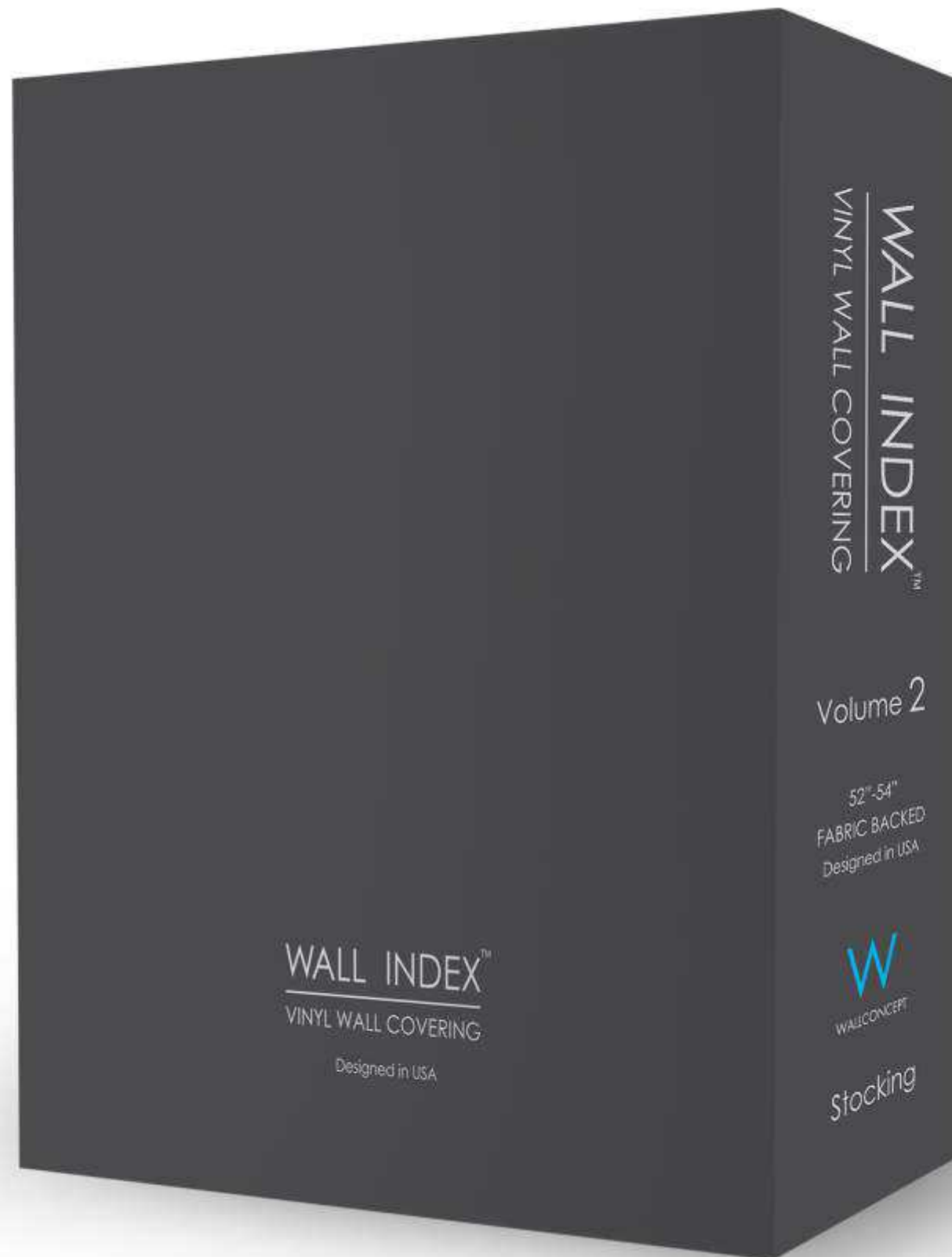
W228-3



W228-4



W228-5



WALLCONCEPT

📍 G-11, Lower Ground Floor, Kalindi Kunj Market,
Okhla, New Delhi - 110025, India.

☎ Phone : 011-41616326, 9810556326

💬 For Order Query : 7303600801

✉ E-mail : wallconceptdelhi@gmail.com

🌐 Website : www.wallconcept.co.in